



EBARA

40DSF51.1M (125)



GIRANTE SEMI-APERTA A RASAMENTO SEMI-OPEN IMPELLER ROUE SEMI-OUVERTE

S.C. 12/12 40DSF51.1M (125)

CURVE DI PRESTAZIONE • PERFORMANCE CURVES • COURBES DE PERFORMANCE

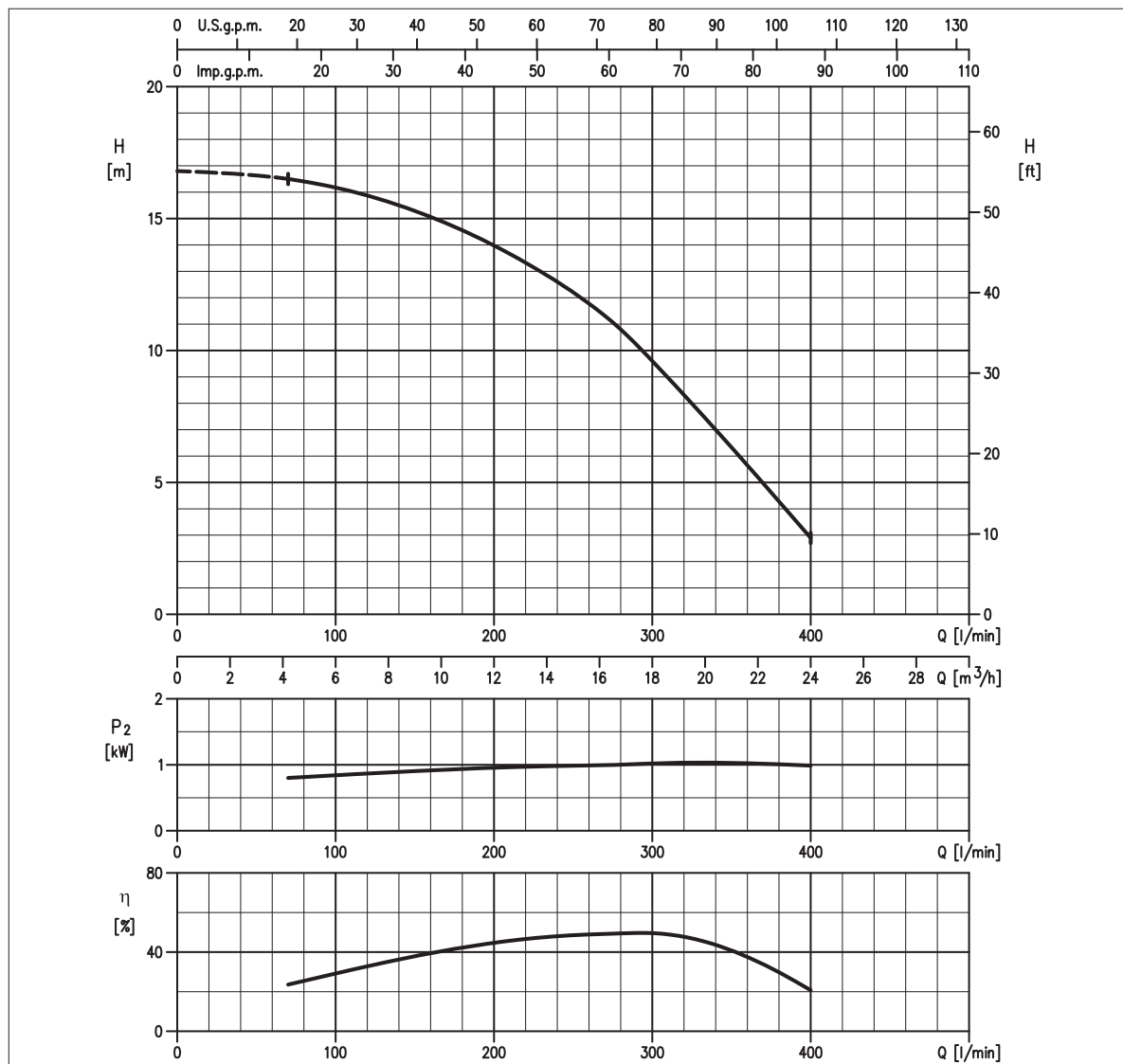


TABELLA PRESTAZIONI • PERFORMANCE TABLE • TABLEAU DE PERFORMANCES

Modello Model Modèle	P ₂		Q = Portata / Flow rate / Débit																					
	[HP]	[kW]	l/min 70	100	150	200	250	300	400	450	473	500	550	580	600	700	800	950	1000	1170	1200	1250	1400	
40DSF51.1M	1,5	1,1	16,5	16,1	15,3	14,1	12	9,2	2,5	-	-	-	-	-	-	-	-	-	-	-	-	-	-	-

H = Prevalenza / Head / Hauteur manometrique totale [m]

IDRAULICA • HYDRAULIC • HYDRAULIQUE

Girante Impeller Roue	SEMI-APERTA SEMI-OPEN SEMI-OUVERTE
Mandata Flanges Brides	DN 40 mm
Massimo diametro passaggi liberi Maximum solid diameter Passage libre maximum	6 mm
Temperatura massima del liquido Maximum liquid temperature Température maximale du liquide	40°C
Doppia tenuta meccanica Double mechanical seal Double garniture mécanique	SiC/SiC/NBR Carb/Cer/NBR

TIPO POMPA • PUMP TYPE • TYPE DE POMPE

Peso Weight Poids	38 kg	Costruzione Construction Construction	GHISA CAST IRON FONTE
-------------------------	--------------	---	--------------------------------------

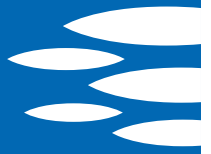
MOTORE • MOTOR • MOTEUR

Tensione Power Tension	230V ±10% 50 Hz	Cavo Cable Câble	10 m
Avviamento ora Starts per hour Nombre de démarrages par huere	15	P ₂	1.1 kW
Classe di isolamento Insulation class Classe d'isolation	H	Corrente di avviamento Start Current Ampérage au démarrage	21 A
Grado di protezione Protection degree Indice de protection	IP 68	Corrente 100% Current 100% Ampérage 100%	7.5 A
		Velocità di rotazione (rpm) Rotation speed (rpm) Vitesse de rotation (rpm)	2850

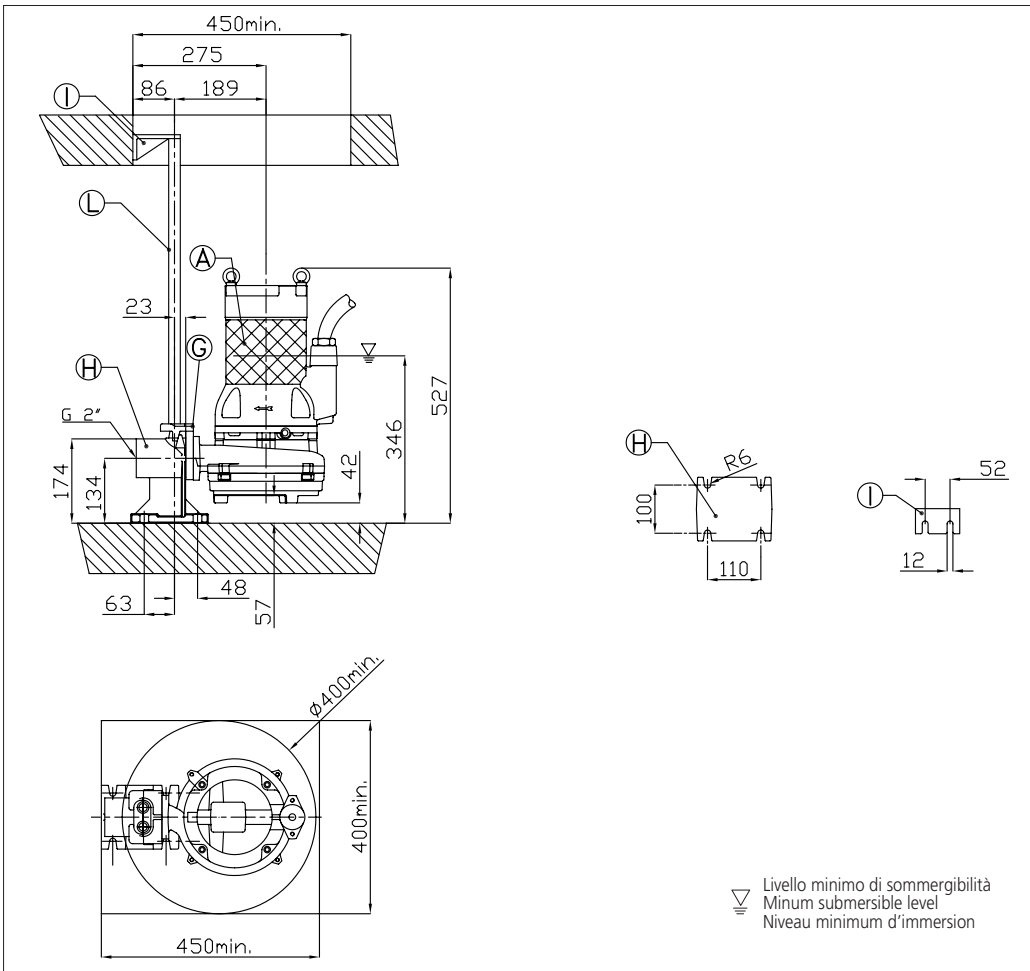
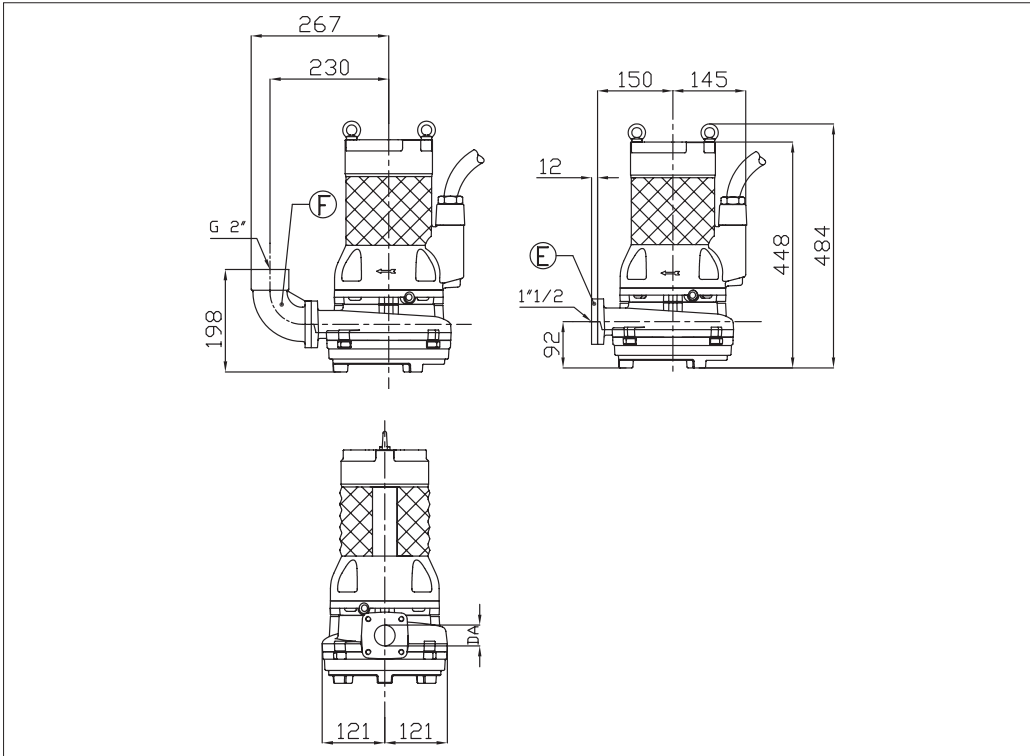


EBARA

40DSF51.1M (125)



DIMENSIONI • DIMENSIONS • DIMENSIONS

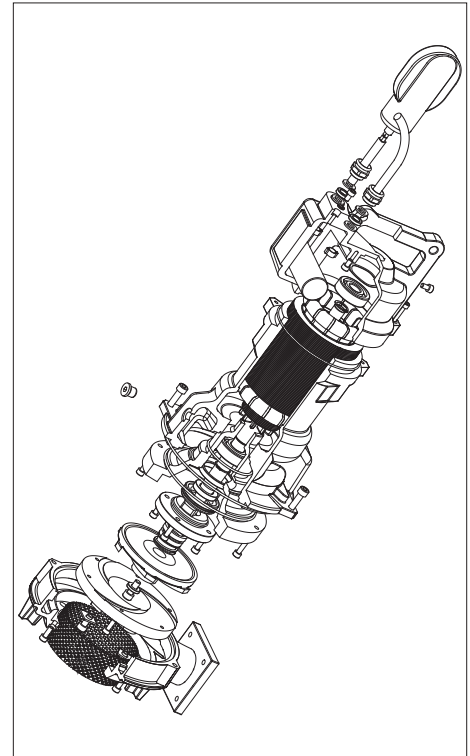


▽ Livello minimo di sommersibilità
 Minum submersible level
 Niveau minimum d'immersion

TABELLA DIMENSIONI • DIMENSIONS TABLE • TABLEAU DE DIMENSIONS

DA	Modello • Model • Modèle	[kW]	Peso • Weight • Poids [kg]
40	40DSF51.1	1.1	38

RICAMBI • REPLACEMENT PARTS • PIÈCES DE RECHANGE



KIT RIPARAZIONE ORDINARIA:
 O-ring, Gommini, Tenute meccaniche
 Paraolio, Rosette tappo olio
ORDINARY REPAIR KIT: O-ring,
 Glands, Mechanical seals, Lip seals, Oil
 plug washers
KIT DE RÉPARATION ORDINAIRE:
 Joint torique, Bouchon caoutchouc,
 Garniture mécanique, Joint à lèvres,
 Bouchon pour chambre à huile



KIT RIPARAZIONE COMPLETA:
 O-ring, Gommini, Tenute meccaniche,
 Paraolio, Rosette tappo olio, Anelli
 cromati, Cavo elettrico, Molla
 precarico, Cuscinetti, Anelli seeger
COMPLETE REPAIR KIT: O-ring,
 Glands, Mechanical seals, Lip seals, Oil
 plug washers, Chromate rings, Electric
 cable, Pre-loading spring, Bearings,
 Circlips
KIT REPARATION COMPLET:
 Joint torique, Bouchon caoutchouc,
 Garniture mécanique, Joint à lèvres,
 Bouchon pour chambre à huile, Joint
 chromé, Cable électrique, Ressort,
 Roulement, Circlips



Girante
 Impeller
 Roue

125 mm

SELEZIONE QDC SELECTION QDC SÉLECTION QDC

Modello Kit scivolo discesa QDC Model Modèle Kit pied d'assise PA DN50	
Gomito/Curva di mandata Elbow Coude/courbe de sortie CUF 2"	
Controflange Counterflanges Contre-bridés FL 1" 1/2 T	

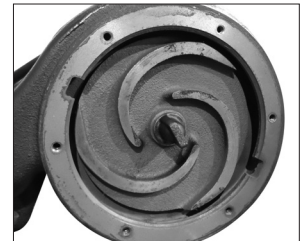
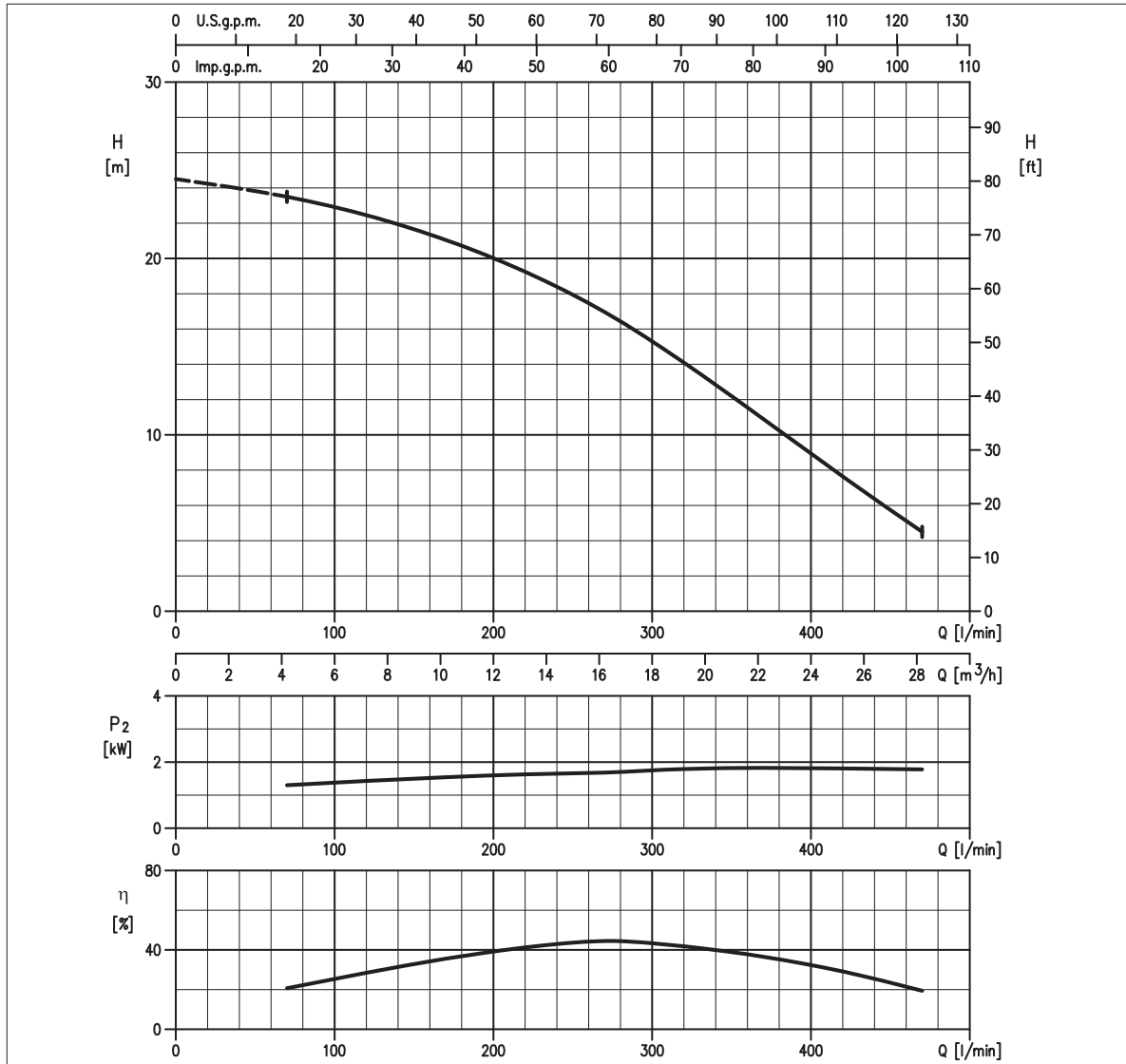
**EBARA**

40DSF51.8M (150)



GIRANTE SEMI-APERTA A RASAMENTO
SEMI-OPEN IMPELLER
ROUE SEMI-OUVERTE

S.C. 12/12 40DSF51.8M (150)

CURVE DI PRESTAZIONE • PERFORMANCE CURVES • COURBES DE PERFORMANCE**TABELLA PRESTAZIONI • PERFORMANCE TABLE • TABLEAU DE PERFORMANCES**

Modello Model Modèle	P ₂		Q = Portata / Flow rate / Débit																					
	[HP]	[kW]	l/min 70	100	150	200	250	300	400	450	473	500	550	580	600	700	800	950	1000	1170	1200	1250	1400	
40DSF51.8M	2,5	1,1	23,8	23,2	22	20,3	18,3	15,3	9,5	6	4,5	-	-	-	-	-	-	-	-	-	-	-	-	-

H = Prevalenza / Head / Hauteur manometrique totale [m]

IDRAULICA • HYDRAULIC • HYDRAULIQUE

Girante Impeller Roue	SEMI-APERTA SEMI-OPEN SEMI-OUVERTE
Mandata Flanges Brides	DN 40 mm
Massimo diametro passaggi liberi Maximum solid diameter Passage libre maximum	6 mm
Temperatura massima del liquido Maximum liquid temperature Température maximale du liquide	40°C
Doppia tenuta meccanica Double mechanical seal Double garniture mécanique	SiC/SiC/NBR Carb/Cer/NBR

TIPO POMPA • PUMP TYPE • TYPE DE POMPE

Peso Weight Poids	38 kg	Costruzione Construction Construction	GHISA CAST IRON FONTE
-------------------------	--------------	---	--------------------------------------

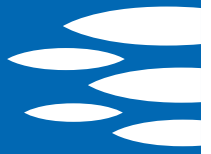
MOTORE • MOTOR • MOTEUR

Tensione Power Tension	230V ±10% 50 Hz	Cavo Cable Câble	10 m
Avviamento ora Starts per hour Nombre de démarrages par huere	15	P ₂	1.8 kW
Classe di isolamento Insulation class Classe d'isolation	H	Corrente di avviamento Start Current Ampérage au démarrage	35 A
Grado di protezione Protection degree Indice de protection	IP 68	Corrente 100% Current 100% Ampérage 100%	10 A
		Velocità di rotazione (rpm) Rotation speed (rpm) Vitesse de rotation (rpm)	2850

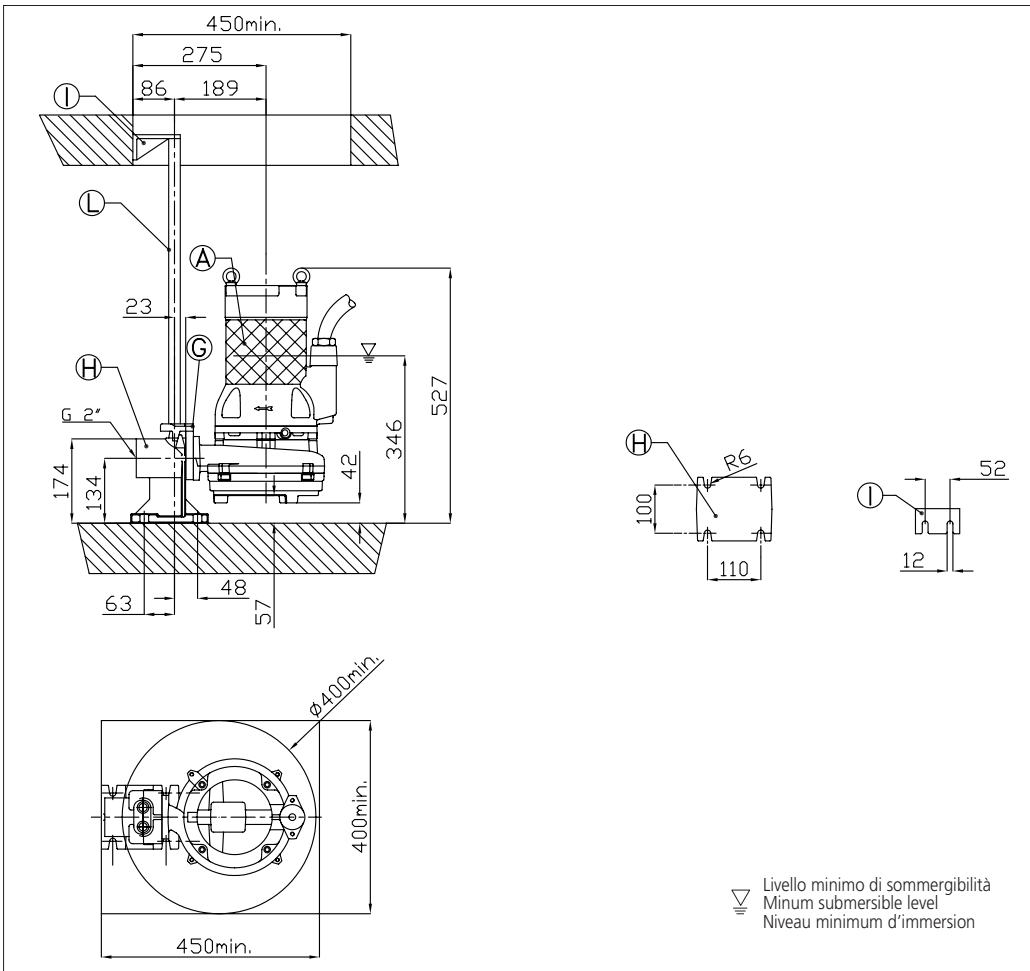
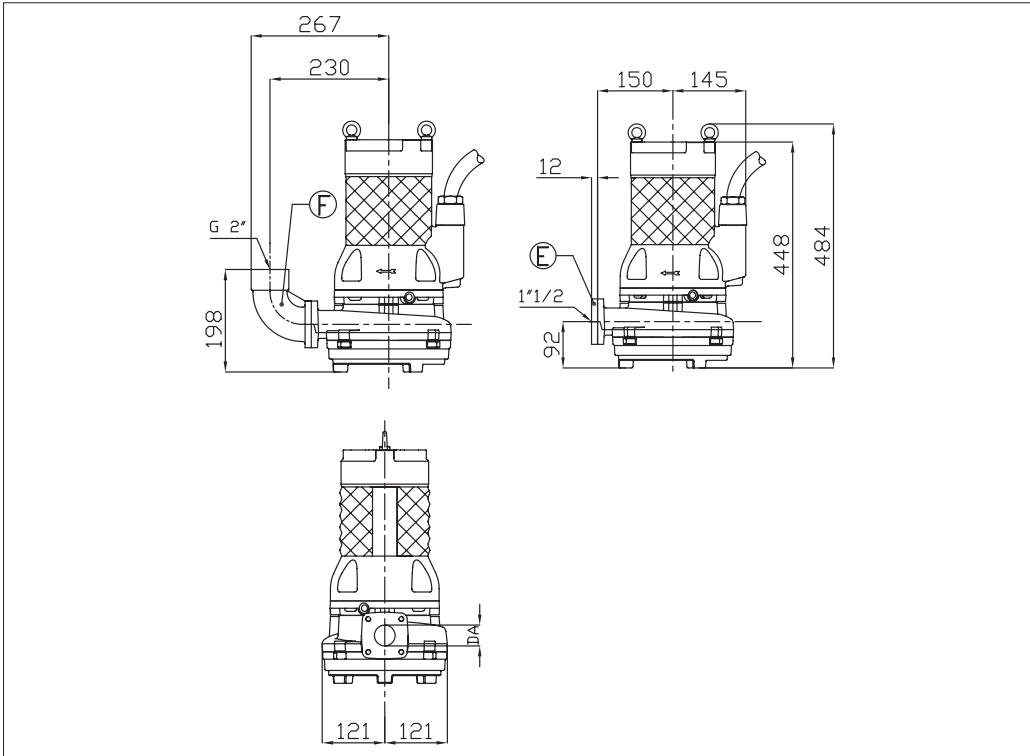


EBARA

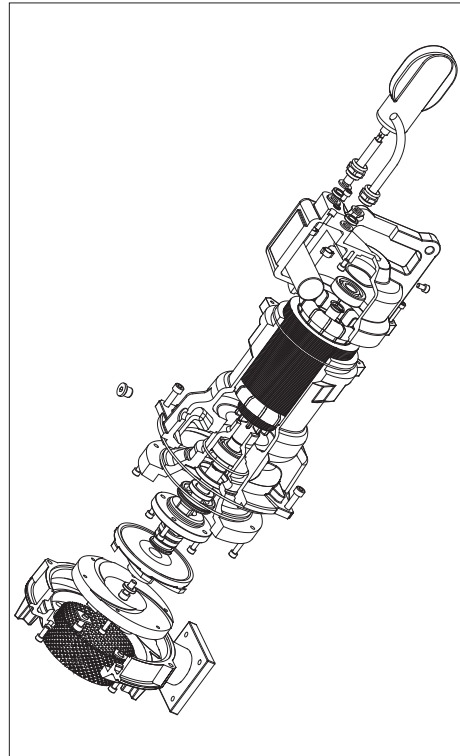
40DSF51.8M (150)



DIMENSIONI • DIMENSIONS • DIMENSIONS



RICAMBI • REPLACEMENT PARTS • PIÈCES DE RECHANGE



KIT RIPARAZIONE ORDINARIA:
O-ring, Gommini, Tenute meccaniche
Paraolio, Rosette tappo olio
ORDINARY REPAIR KIT: O-ring,
Glands, Mechanical seals, Lip seals, Oil
plug washers
KIT DE RÉPARATION ORDINAIRE:
Joint torique, Bouchon caoutchouc,
Garniture mécanique, Joint à lèvres,
Bouchon pour chambre à huile



KIT RIPARAZIONE COMPLETA:
O-ring, Gommini, Tenute meccaniche,
Paraolio, Rosette tappo olio, Anelli
cromati, Cavo elettrico, Molla
precarico, Cuscinetti, Anelli seeger
COMPLETE REPAIR KIT: O-ring,
Glands, Mechanical seals, Lip seals, Oil
plug washers, Chromate rings, Electric
cable, Pre-loading spring, Bearings,
Circlips
KIT REPARATION COMPLET:
Joint torique, Bouchon caoutchouc,
Garniture mécanique, Joint à lèvres,
Bouchon pour chambre à huile, Joint
chromé, Cable électrique, Ressort,
Roulement, Circlips



Girante
Impeller
Roue

150 mm

SELEZIONE QDC SELECTION QDC SÉLECTION QDC

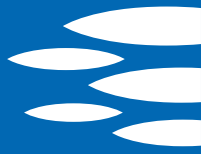
Modello Kit scivolo discesa QDC Model Modèle Kit pied d'assise PA DN50	
Gomito/Curva di mandata Elbow Coude/courbe de sortie CUF 2"	
Controflange Counterflanges Contre-brides FL 1" 1/2 T	

TABELLA DIMENSIONI • DIMENSIONS TABLE • TABLEAU DE DIMENSIONS

DA	Modello • Model • Modèle	[kW]	Peso • Weight • Poids [kg]
40	40DSF51.8	1.8	38

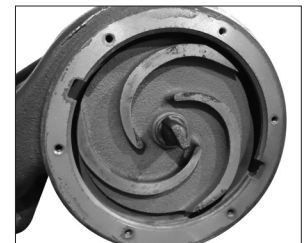
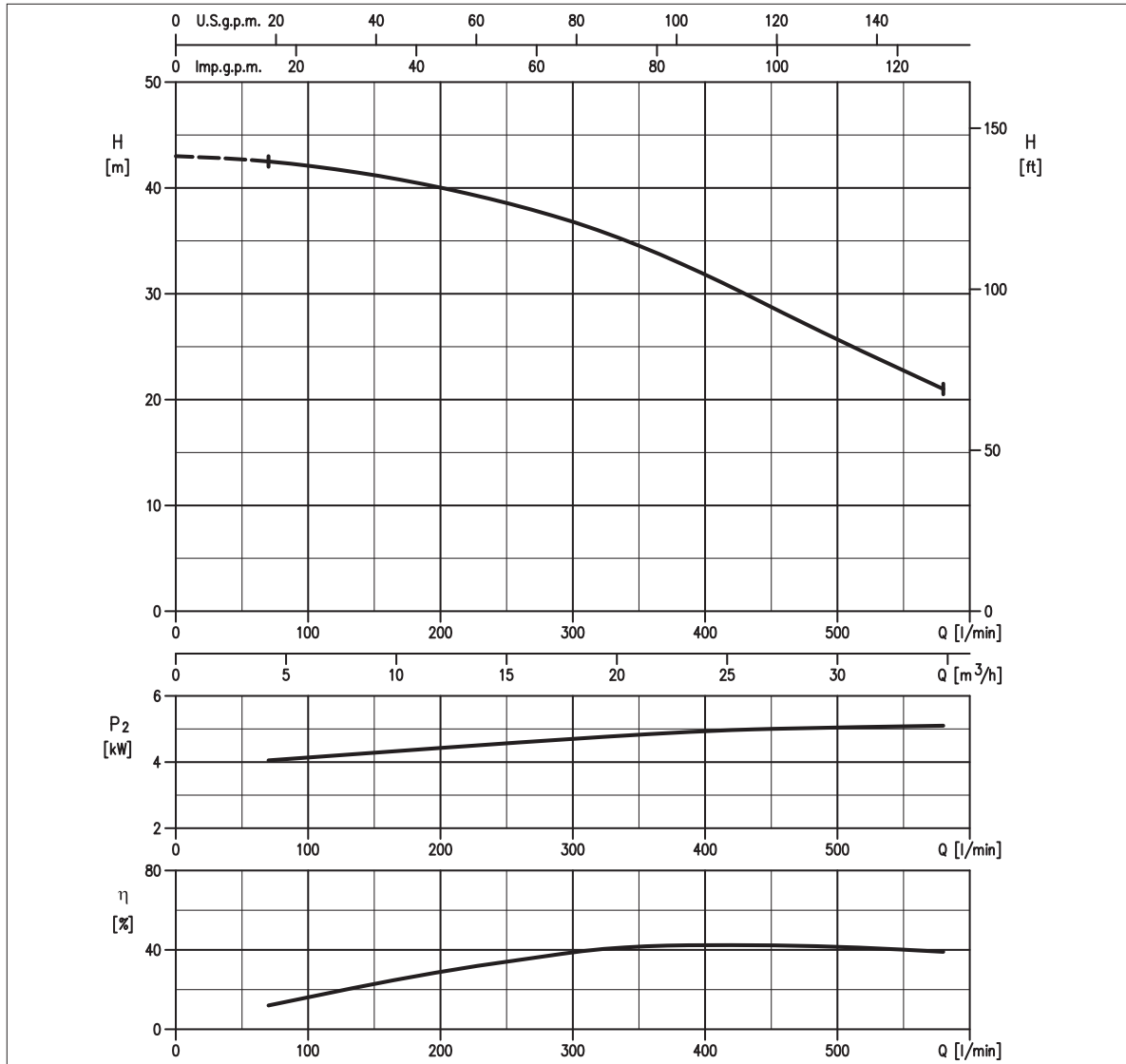
**EBARA**

40DSF55.7 (192)



GIRANTE SEMI-APERTA A RASAMENTO
SEMI-OPEN IMPELLER
ROUE SEMI-OUVERTE

S.C. 12/12 40DSF55.7 (192)

CURVE DI PRESTAZIONE • PERFORMANCE CURVES • COURBES DE PERFORMANCE**TABELLA PRESTAZIONI • PERFORMANCE TABLE • TABLEAU DE PERFORMANCES**

Modello Model Modèle	P ₂		Q = Portata / Flow rate / Débit																					
	[HP]	[kW]	l/min 70	100	150	200	250	300	400	450	473	500	550	580	600	700	800	950	1000	1170	1200	1250	1400	
40DSF55.7	7,5	5,7	42,5	42	41,5	40	38,9	36,8	32	29	27,5	25,8	23	21	-	-	-	-	-	-	-	-	-	-

H = Prevalenza / Head / Hauteur manometrique totale [m]

IDRAULICA • HYDRAULIC • HYDRAULIQUE

Girante Impeller Roue	SEMI-APERTA SEMI-OPEN SEMI-OUVERTE
Mandata Flanges Brides	DN 40 mm
Massimo diametro passaggi liberi Maximum solid diameter Passage libre maximum	7 mm
Temperatura massima del liquido Maximum liquid temperature Température maximale du liquide	40°C
Doppia tenuta meccanica Double mechanical seal Double garniture mécanique	SiC/SiC/NBR Carb/Cer/NBR

TIPO POMPA • PUMP TYPE • TYPE DE POMPE

Peso Weight Poids	68 kg	Costruzione Construction Construction	GHISA CAST IRON FONTE
-------------------------	--------------	---	--------------------------------------

MOTORE • MOTOR • MOTEUR

Tensione Power Tension	400/690V ±10% 50 Hz	Cavo Cable Câble	10 m
Avviamento ora Starts per hour Nombre de démarrages par huere	15	P ₂	5.7 kW
Classe di isolamento Insulation class Classe d'isolation	H	Corrente di avviamento Start Current Ampérage au démarrage	73,8 A
Grado di protezione Protection degree Indice de protection	IP 68	Corrente 100% Current 100% Ampérage 100%	12,5 A
		Velocità di rotazione (rpm) Rotation speed (rpm) Vitesse de rotation (rpm)	2850

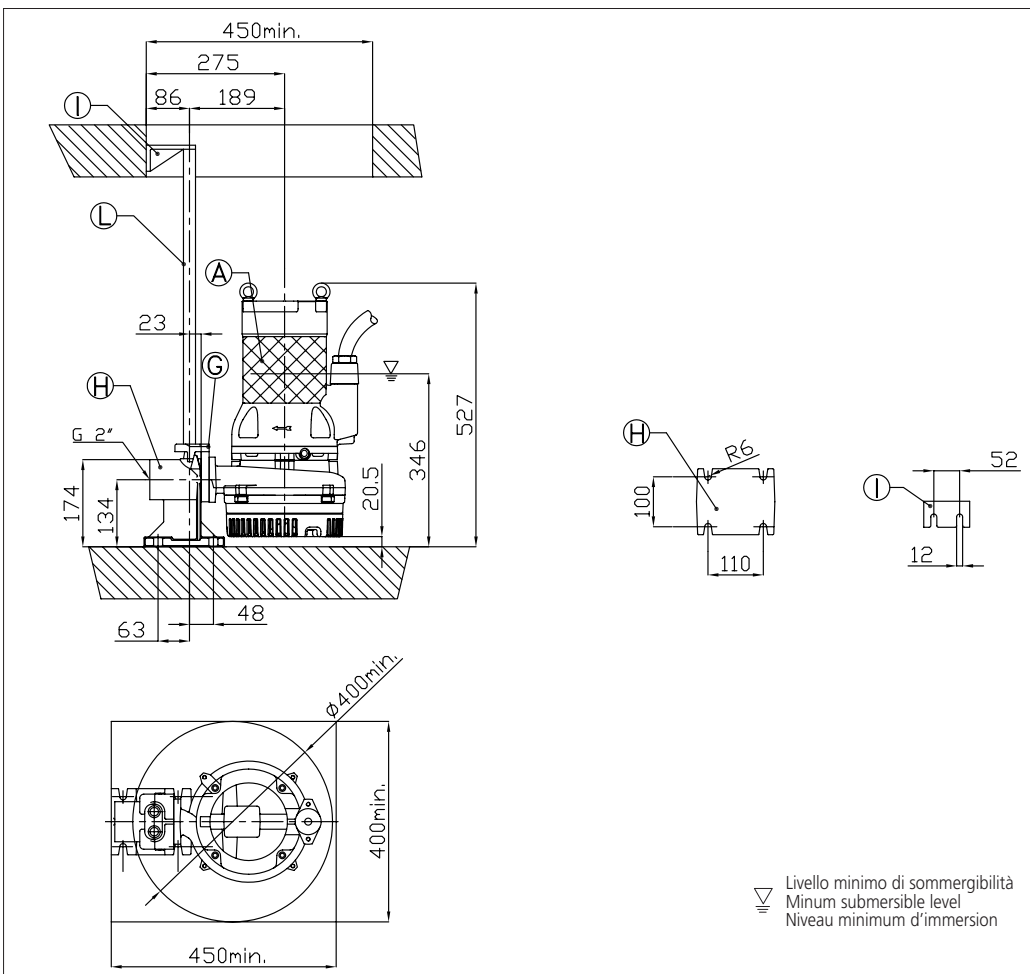
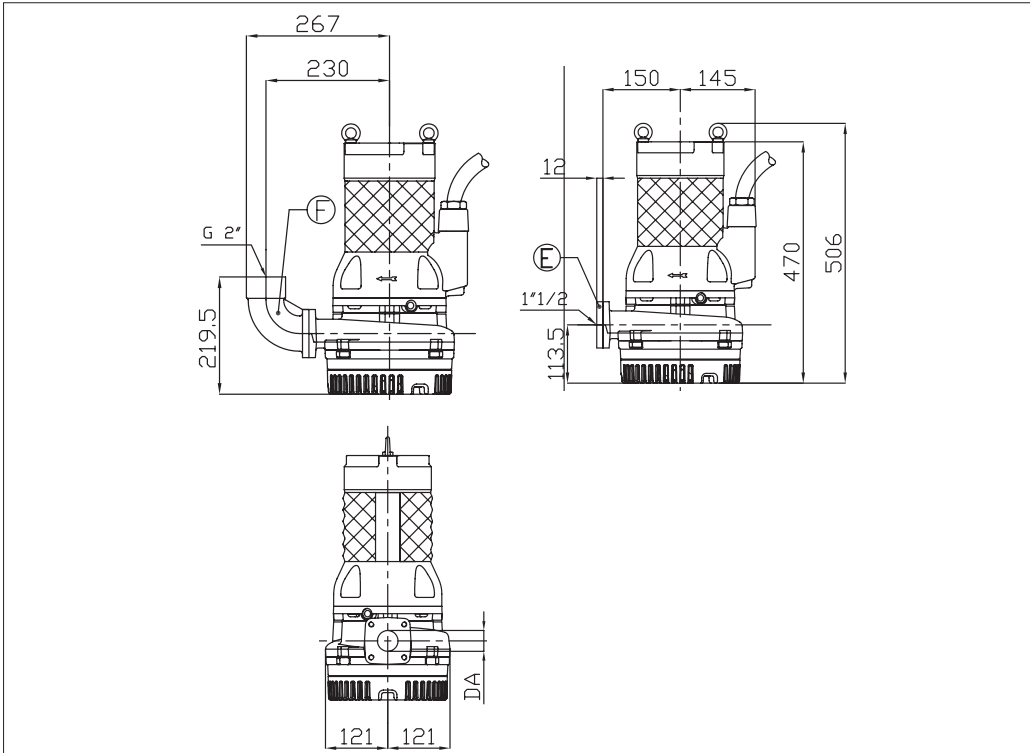


EBARA

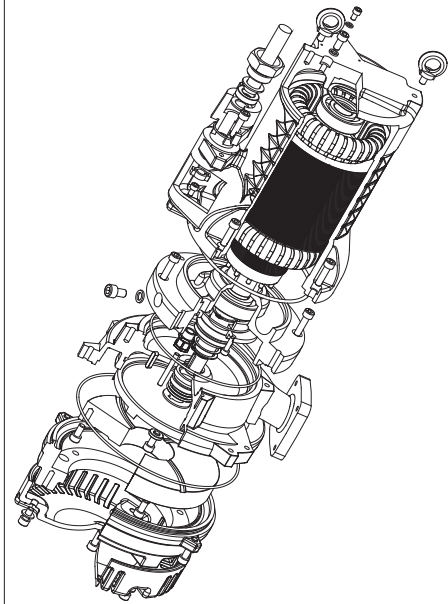
40DSF55.7 (192)



DIMENSIONI • DIMENSIONS • DIMENSIONS



RICAMBI • REPLACEMENT PARTS • PIÈCES DE RECHANGE



KIT RIPARAZIONE ORDINARIA:
O-ring, Gommini, Tenute meccaniche
Paraolio, Rosette tappo olio
ORDINARY REPAIR KIT: O-ring,
Glands, Mechanical seals, Lip seals, Oil
plug washers
KIT DE RÉPARATION ORDINAIRE:
Joint torique, Bouchon caoutchouc,
Garniture mécanique, Joint à lèvres,
Bouchon pour chambre à huile



KIT RIPARAZIONE COMPLETA:
O-ring, Gommini, Tenute meccaniche,
Paraolio, Rosette tappo olio, Anelli
cromati, Cavo elettrico, Molla
precarico, Cuscinetti, Anelli seeger
COMPLETE REPAIR KIT: O-ring,
Glands, Mechanical seals, Lip seals, Oil
plug washers, Chromate rings, Electric
cable, Pre-loading spring, Bearings,
Circlips
KIT REPARATION COMPLET:
Joint torique, Bouchon caoutchouc,
Garniture mécanique, Joint à lèvres,
Bouchon pour chambre à huile, Joint
chromé, Cable électrique, Ressort,
Roulement, Circlips

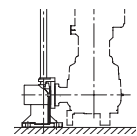


Girante
Impeller
Roue

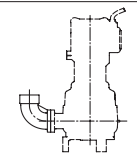
192 mm

SELEZIONE QDC SELECTION QDC SÉLECTION QDC

Modello Kit scivolo discesa
QDC Model
Modèle Kit pied d'assise
PA DN50



Gomito/Curva di mandata
Elbow
Coude/courbe de sortie
CUF 2"



Controflange
Counterflanges
Contre-bridés
FL 1" 1/2 T

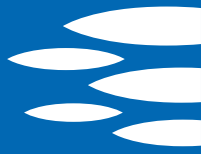


TABELLA DIMENSIONI • DIMENSIONS TABLE • TABLEAU DE DIMENSIONS

DA	Modello • Model • Modèle	[kW]	Peso • Weight • Poids [kg]
40	40DSF55,7	5.7	68

**EBARA**

50DS51.5



GIRANTE SEMI-APERTA A RASAMENTO SEMI-OPEN IMPELLER ROUE SEMI-OUVERTE

S.C. 12/12 50DS51.5

CURVE DI PRESTAZIONE • PERFORMANCE CURVES • COURBES DE PERFORMANCE

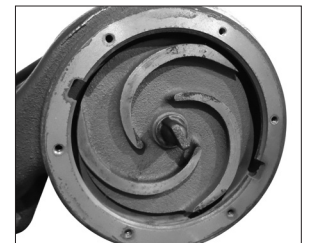
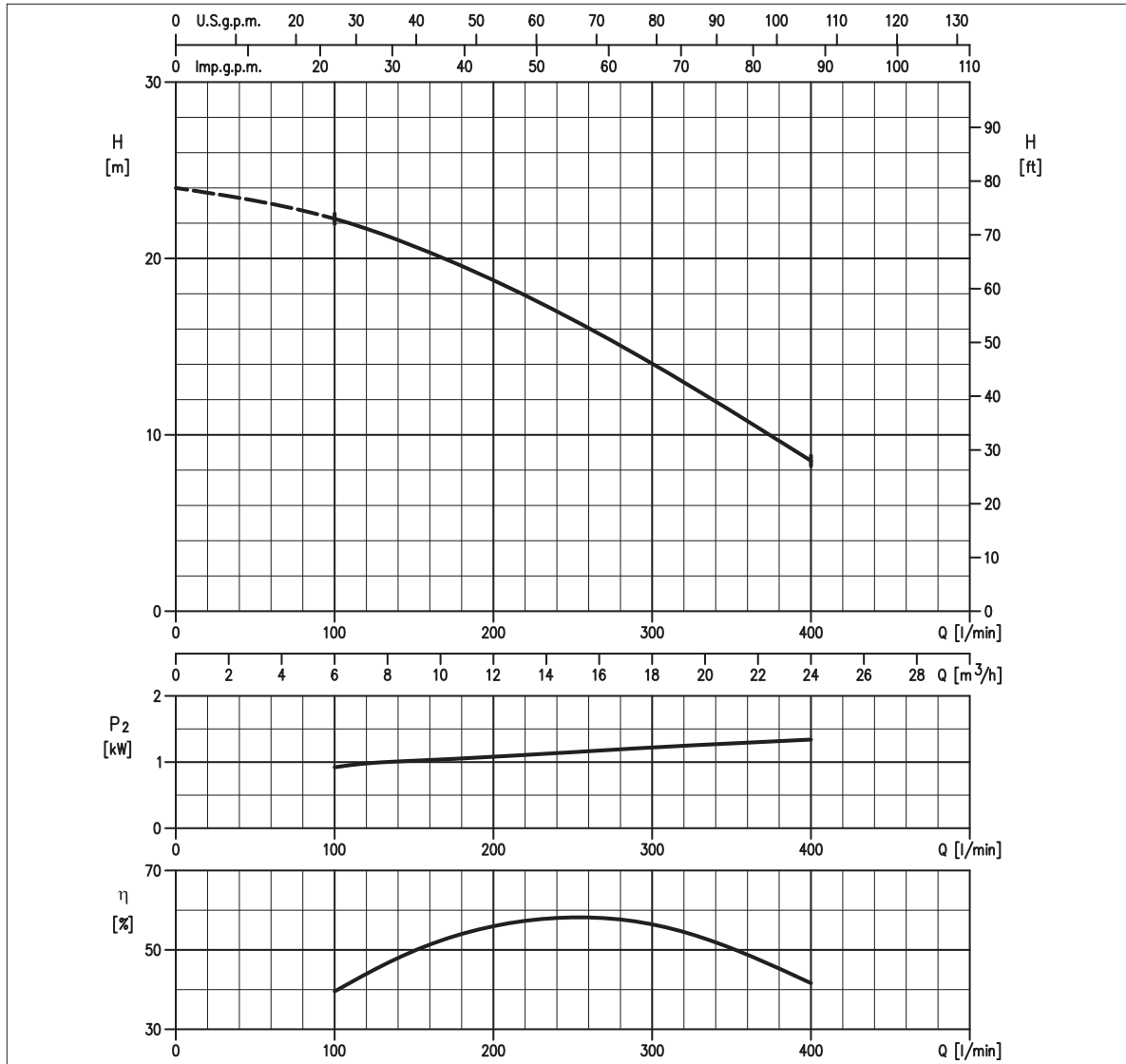


TABELLA PRESTAZIONI • PERFORMANCE TABLE • TABLEAU DE PERFORMANCES

Modello Model Modèle	P ₂		Q = Portata / Flow rate / Débit																					
	[HP]	[kW]	l/min 70 m ³ /h 4	100	150	200	250	300	400	450	473	500	550	580	600	700	800	950	1000	1170	1200	1250	1400	
50DS51.5	2	1.5	-	22,3	20,7	18,8	16,5	14	8,5	-	-	-	-	-	-	-	-	-	-	-	-	-	-	-

H = Prevalenza / Head / Hauteur manometrique totale [m]

IDRAULICA • HYDRAULIC • HYDRAULIQUE

Girante Impeller Roue	SEMI-APERTA SEMI-OPEN SEMI-OUVERTE
Mandata Flanges Brides	G 2"
Massimo diametro passaggi liberi Maximum solid diameter Passage libre maximum	5 mm
Temperatura massima del liquido Maximum liquid temperature Température maximale du liquide	40°C
Doppia tenuta meccanica Double mechanical seal Double garniture mécanique	SiC/SiC/NBR Carb/Cer/NBR

TIPO POMPA • PUMP TYPE • TYPE DE POMPE

Peso Weight Poids	25 kg	Costruzione Construction Construction	GHISA CAST IRON FONTE
-------------------------	--------------	---	--------------------------------------

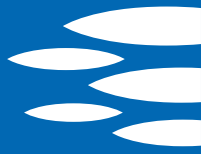
MOTORE • MOTOR • MOTEUR

Tensione Power Tension	380/415V ±10% 50 Hz	Cavo Cable Câble	6 m
Avviamento ora Starts per hour Nombre de démarrages par huere	10	P ₂	1.5 kW
Classe di isolamento Insulation class Classe d'isolation	F	Voltaggio	380 V 400 V 415 V
Grado di protezione Protection degree Indice de protection	IP 68	Corrente di avviamento Start Current Ampérage au démarrage	20,5 A 21,1 A 22,5 A
		Corrente 100% Current 100% Ampérage 100%	3,7 A 3,3 A 3,3 A
		Velocità di rotazione (rpm) Rotation speed (rpm) Vitesse de rotation (rpm)	2850

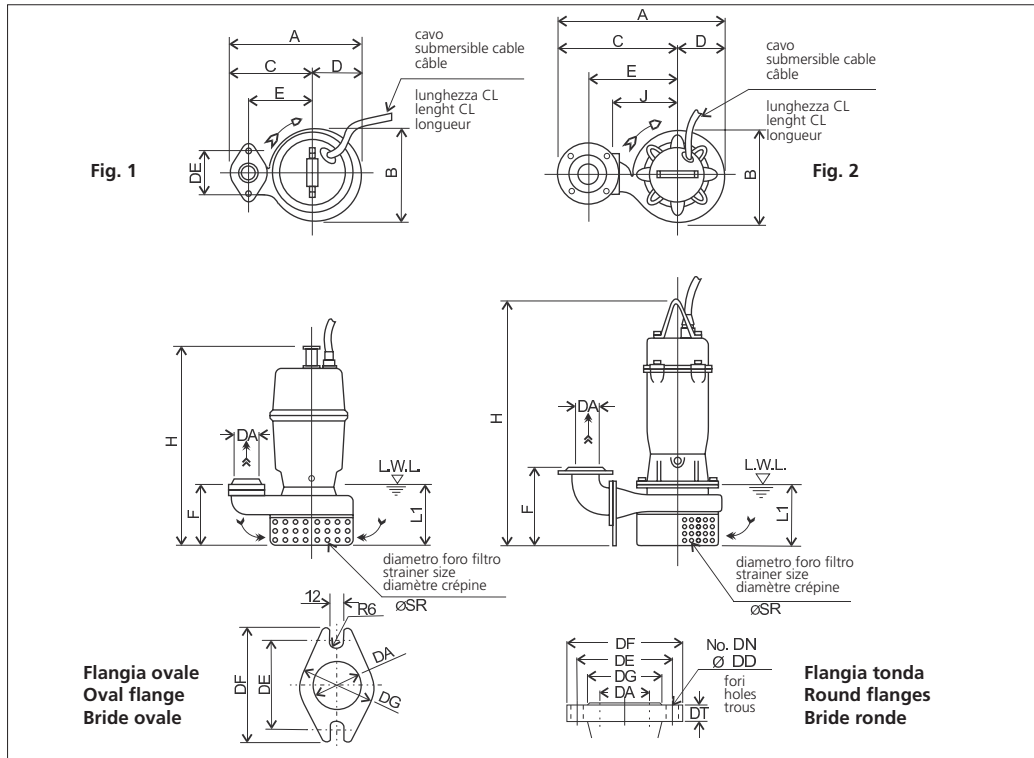


EBARA

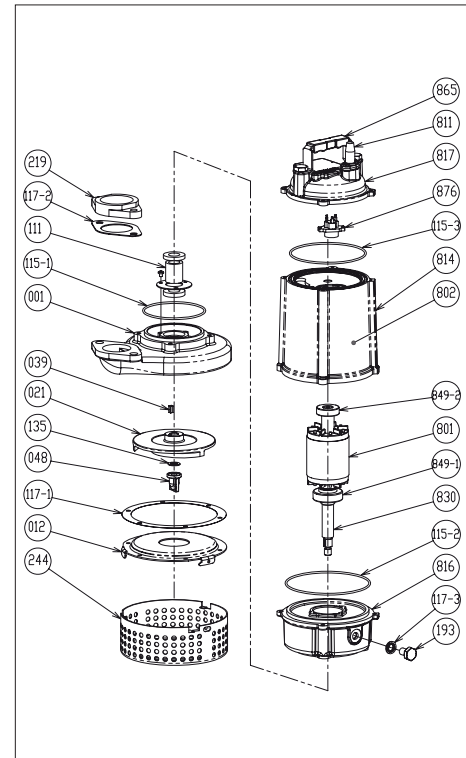
50DS51.5



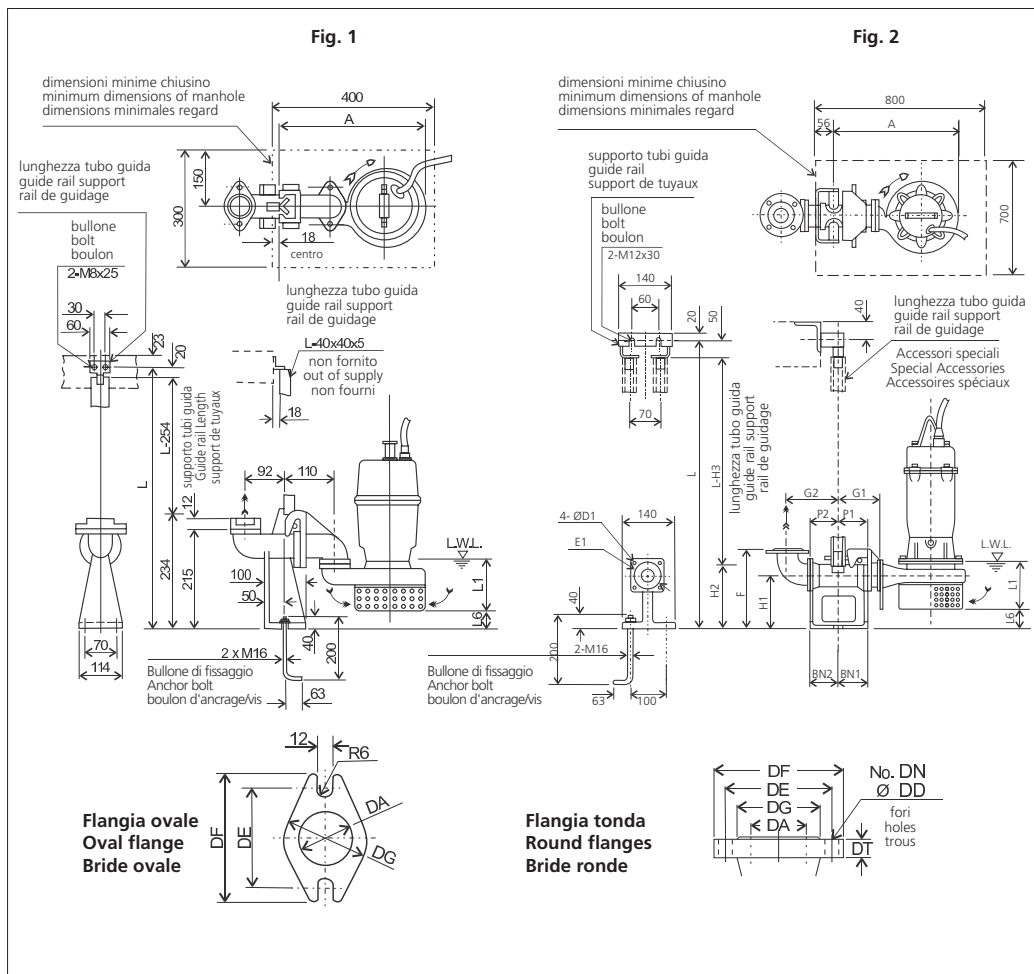
DIMENSIONI • DIMENSIONS • DIMENSIONS



RICAMBI • REPLACEMENT PARTS • PIÈCES DE RECHANGE



001	Corpo pompa - Pump casing - Corps de la pompe
021	Girante - Impeller - Roue
039	Linguetta - Key - Languette
048	Dado girante - Nut - Écrou roue
111	Tenuta meccanica - Mechanical seal Garniture mécanique
115-2	Anello OR - O-ring - Bague OR
115-3	Anello OR - O-ring - Bague OR
115-1	Anello OR - O-ring - Bague OR
117-2	Guarnizione - Gasket - Joint
117-3	Guarnizione - Gasket - Joint
135	Rondella - Washer - Rondelle d'étanchiété
811	Cavo - Cable - Câble
849-1	Cuscinetto - Bearing - Coussinet
849-2	Cuscinetto - Bearing - Coussinet
876	Termoprotettore - Auto cut - Protection thermique



MODELLO KIT SCIVOLO DISCESA (QDC)
QDC MODEL
MODÈLE KIT PIED D'ASSISE (QDC)
LS 50

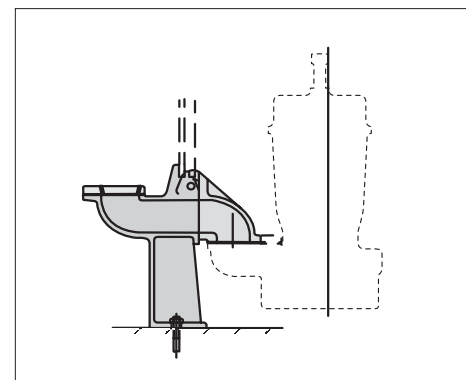


TABELLA DIMENSIONI QDC • QDC DIMENSIONS TABLE • TABLEAU DE DIMENSIONS QDC

DA	Modello Model Modèle	Fig.	Tipo Flangia Flanges type Type bride	[kW]	DA	A	P1	P2	G1	G2	F	H1	H2	H3	L1 (*)	L6	BN1	BN2	D1	E1	QDC Mod.	[kg]
50	50DS51.5	1	Ovale • Oval • Ovale	1.5	G2	-	-	-	-	-	-	-	-	-	120	25	-	-	-	-	L550	9

**EBARA****50DS52.2**

GIRANTE SEMI-APERTA A RASAMENTO
SEMI-OPEN IMPELLER
ROUE SEMI-OUVERTE

S.C. 12/12 50DS52.2

CURVE DI PRESTAZIONE • PERFORMANCE CURVES • COURBES DE PERFORMANCE

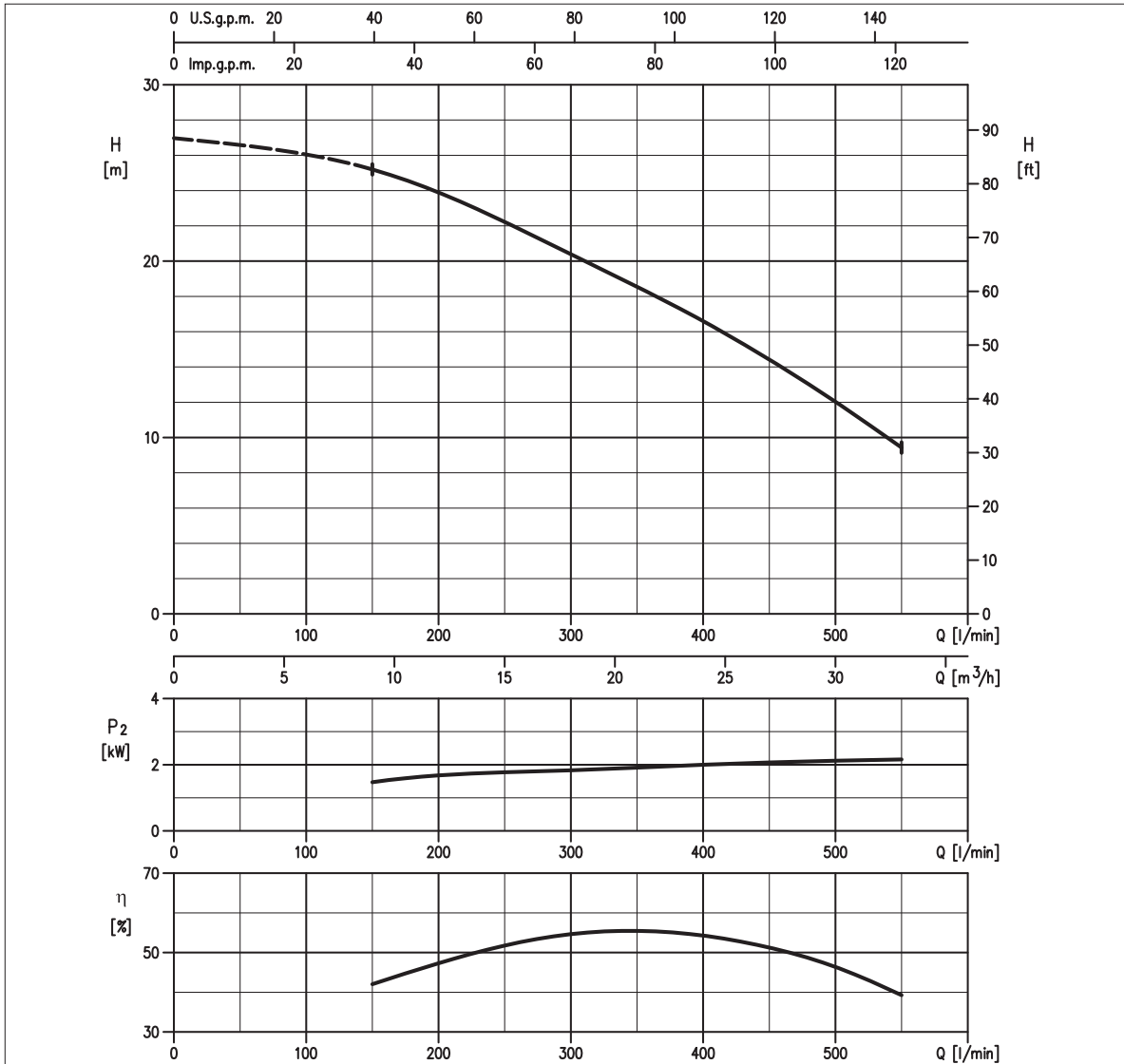


TABELLA PRESTAZIONI • PERFORMANCE TABLE • TABLEAU DE PERFORMANCES

Modello Model Modèle	P ₂		Q = Portata / Flow rate / Débit																					
	[HP]	[kW]	l/min 70	100	150	200	250	300	400	450	473	500	550	580	600	700	800	950	1000	1170	1200	1250	1400	
50DS51.5	3	2.2	-	-	25,2	23,7	22,1	20,4	16,6	14,4	13,3	12	9,4	-	-	-	-	-	-	-	-	-	-	-

H = Prevalenza / Head / Hauteur manometrique totale [m]

IDRAULICA • HYDRAULIC • HYDRAULIQUE

Girante Impeller Roue	SEMI-APERTA SEMI-OPEN SEMI-OUVERTE
Mandata Flanges Brides	DN 50 mm
Massimo diametro passaggi liberi Maximum solid diameter Passage libre maximum	5 mm
Temperatura massima del liquido Maximum liquid temperature Température maximale du liquide	40°C
Doppia tenuta meccanica Double mechanical seal Double garniture mécanique	SiC/SiC/NBR Carb/Cer/NBR

TIPO POMPA • PUMP TYPE • TYPE DE POMPE

Peso Weight Poids	55 kg	Costruzione Construction Construction	GHISA CAST IRON FONTE
-------------------------	--------------	---	--------------------------------------

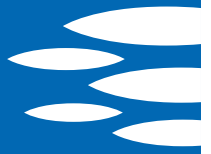
MOTORE • MOTOR • MOTEUR

Tensione Power Tension	380/415V ±10% 50 Hz	Cavo Cable Câble	10 m
Avviamento ora Starts per hour Nombre de démarrages par huere	10	P ₂	2.2 kW
Classe di isolamento Insulation class Classe d'isolation	F	Voltaggio	380 V 400 V 415 V
Grado di protezione Protection degree Indice de protection	IP 68	Corrente di avviamento Start Current Ampérage au démarrage	28,7 A 30,0 A 31,5 A
		Corrente 100% Current 100% Ampérage 100%	5,10 A 5,00 A 4,60 A
		Velocità di rotazione (rpm) Rotation speed (rpm) Vitesse de rotation (rpm)	2850

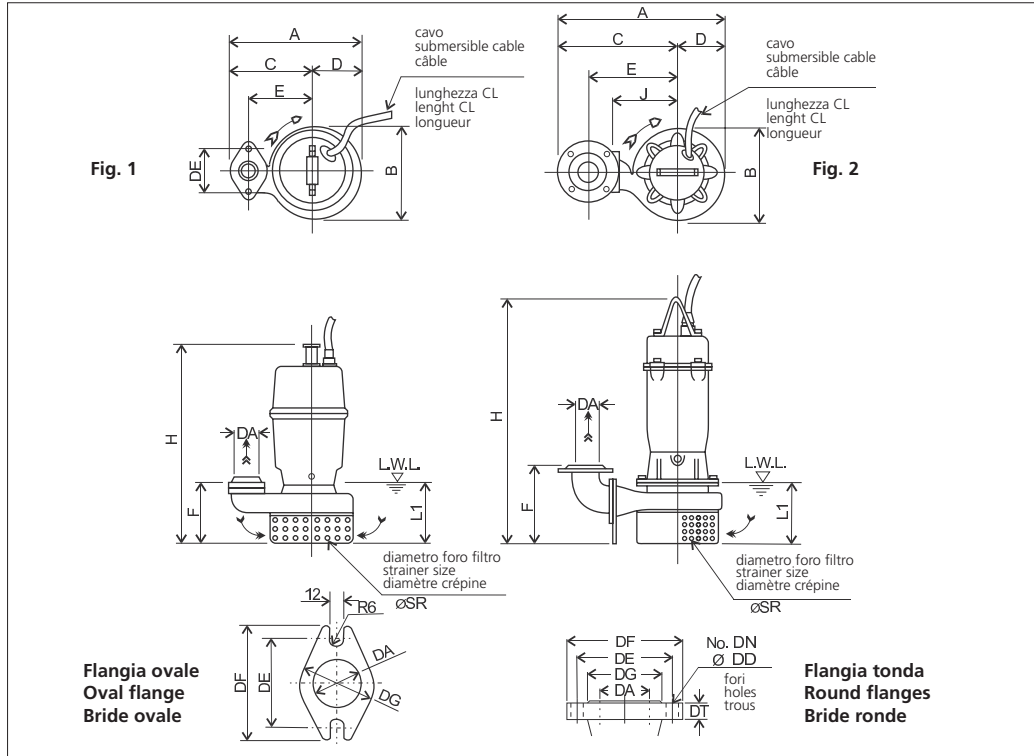


EBARA

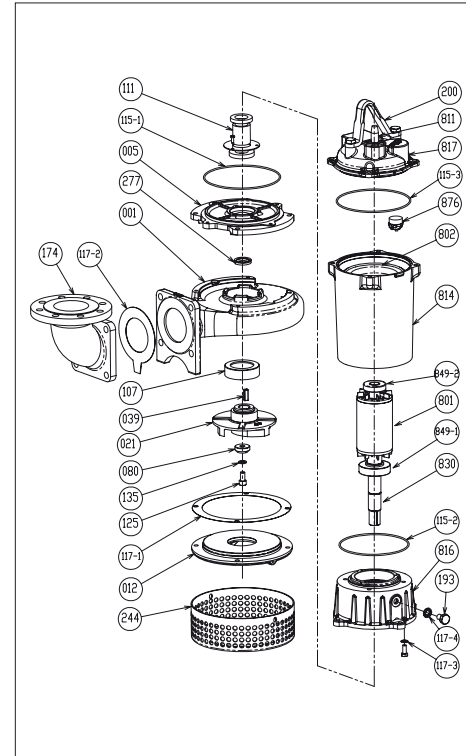
50DS52.2



DIMENSIONI • DIMENSIONS • DIMENSIONS



RICAMBI • REPLACEMENT PARTS • PIÈCES DE RECHANGE



001	Corpo pompa - Pump casing - Corps de la pompe
021	Girante - Impeller - Roue
039	Linguetta - Key - Languette
080	Bussola - Bushing - Bague d'usure
107	Anello di rasamento - Wear ring - Anneau arasement
111	Tenuta meccanica - Mechanical seal Garniture mécanique
115-2	Anello OR - O-ring - Bague OR
115-3	Anello OR - O-ring - Bague OR
115-1	Anello OR - O-ring - Bague OR
117-1	Guarnizione - Gasket - Joint
117-2	Guarnizione - Gasket - Joint
117-3	Guarnizione - Gasket - Joint
135	Rondella - Washer - Rondelle d'étanchiété
277	Anello tenuta - V-ring - Joint de garniture
811	Cavo - Cable - Câble
849-1	Cuscinetto - Bearing - Coussinet
849-2	Cuscinetto - Bearing - Coussinet
876	Termoprotettore - Auto cut - Protection thermique

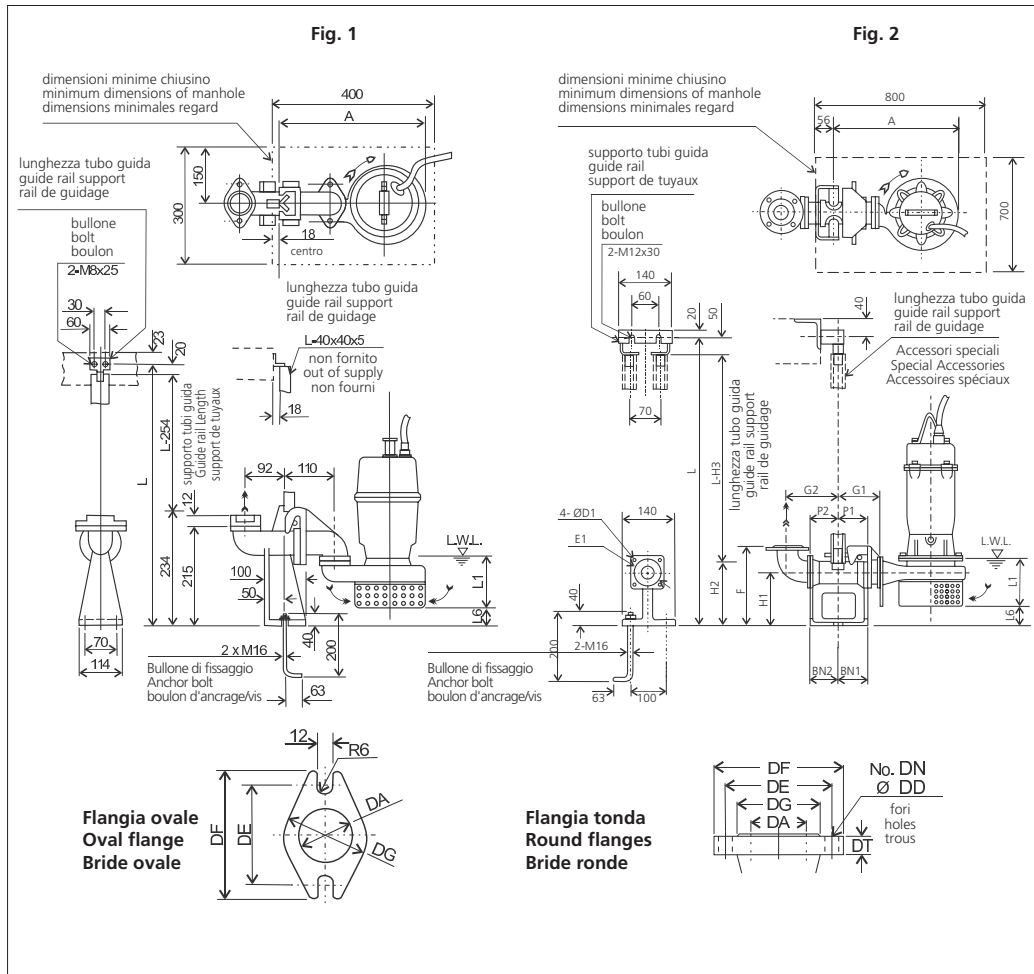
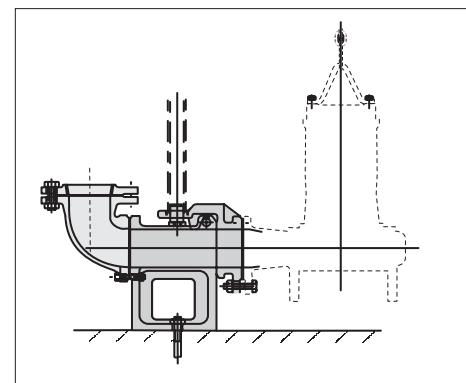
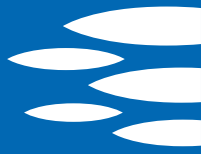


TABELLA DIMENSIONI QDC • QDC DIMENSIONS TABLE • TABLEAU DE DIMENSIONS QDC

DA	Modello Model Modèle	Fig.	Tipo Flangia Flanges type Type bride	[kW]	DA	A	P1	P2	G1	G2	F	H1	H2	H3	L1 (*)	L6	BN1	BN2	D1	E1	QDC Mod.	[kg]
50	50DS52.2	2	Tonda • Round • Ronde	2.2	50	415	78	80	115	135	230	135	165	215	160	32	75	80	12	120	LM50	11

**MODELLO KIT SCIVOLO DISCESA (QDC)
QDC MODEL
MODÈLE KIT PIED D'ASSISE (QDC)
LM 50**



**EBARA****50DS53.7**

GIRANTE SEMI-APERTA A RASAMENTO
SEMI-OPEN IMPELLER
ROUE SEMI-OUVERTE

S.C. 12/12 50DS53.7

CURVE DI PRESTAZIONE • PERFORMANCE CURVES • COURBES DE PERFORMANCE

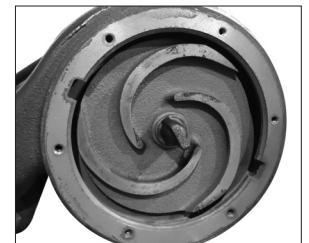
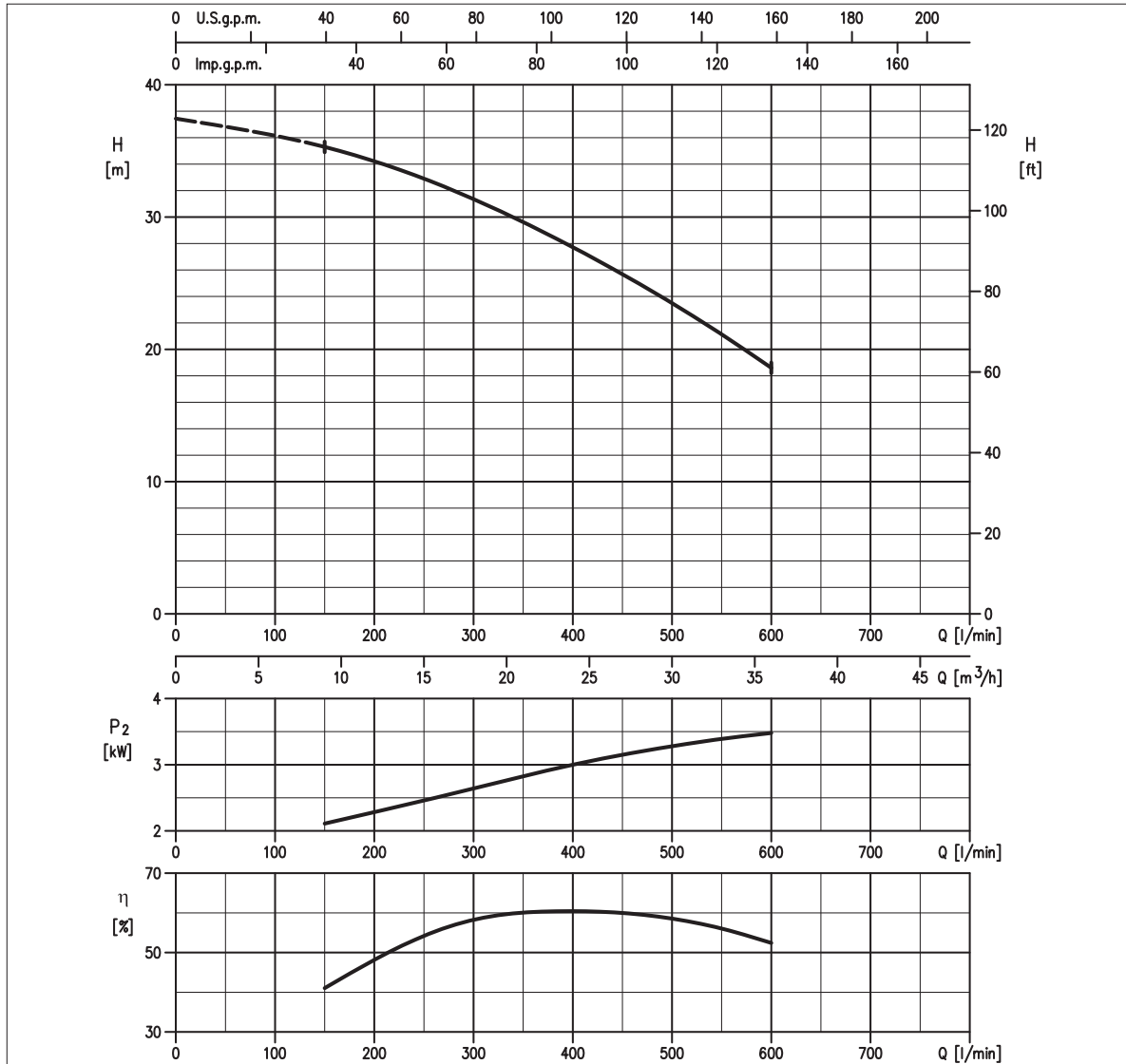


TABELLA PRESTAZIONI • PERFORMANCE TABLE • TABLEAU DE PERFORMANCES

Modello Model Modèle	P ₂		Q = Portata / Flow rate / Débit																					
	[HP]	[kW]	l/min 70	100	150	200	250	300	400	450	473	500	550	580	600	700	800	950	1000	1170	1200	1250	1400	
50DS53.7	5	3.7	-	-	35,3	34,2	32,9	31,4	27,7	25,7	24,6	23,5	21,1	19,5	18,6	-	-	-	-	-	-	-	-	-

H = Prevalenza / Head / Hauteur manometrique totale [m]

IDRAULICA • HYDRAULIC • HYDRAULIQUE

Girante Impeller Roue	SEMI-APERTA SEMI-OPEN SEMI-OUVERTE
Mandata Flanges Brides	DN 50 mm
Massimo diametro passaggi liberi Maximum solid diameter Passage libre maximum	5 mm
Temperatura massima del liquido Maximum liquid temperature Température maximale du liquide	40°C
Doppia tenuta meccanica Double mechanical seal Double garniture mécanique	SiC/SiC/NBR Carb/Cer/NBR

TIPO POMPA • PUMP TYPE • TYPE DE POMPE

Peso Weight Poids	61 kg	Costruzione Construction Construction	GHISA CAST IRON FONTE
-------------------------	--------------	---	--------------------------------------

MOTORE • MOTOR • MOTEUR

Tensione Power Tension	380/415V ±10% 50 Hz	Cavo Cable Câble	10 m
Avviamento ora Starts per hour Nombre de démarrages par huere	10	P ₂	3.7 kW
Classe di isolamento Insulation class Classe d'isolation	F	Voltaggio	380 V 400 V 415 V
Grado di protezione Protection degree Indice de protection	IP 68	Corrente di avviamento Start Current Ampérage au démarrage	51,2 A 51,0 A 53,0 A
		Corrente 100% Current 100% Ampérage 100%	8,80 A 7,80 A 7,80 A
		Velocità di rotazione (rpm) Rotation speed (rpm) Vitesse de rotation (rpm)	2850

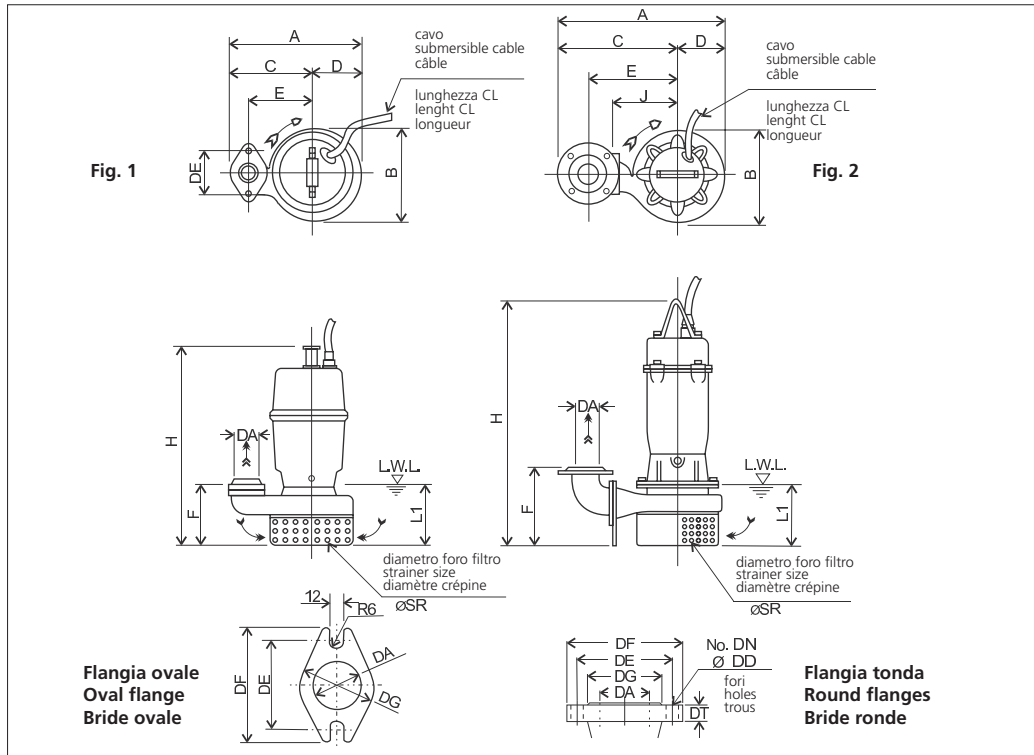


EBARA

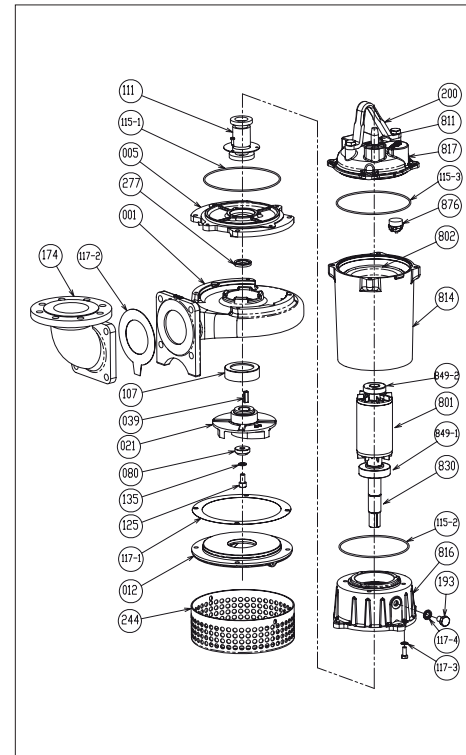
50DS53.7



DIMENSIONI • DIMENSIONS • DIMENSIONS



RICAMBI • REPLACEMENT PARTS • PIÈCES DE RECHANGE



001	Corpo pompa - Pump casing - Corps de la pompe
021	Girante - Impeller - Roue
039	Linguetta - Key - Languette
080	Bussola - Bushing - Bague d'usure
107	Anello di rasamento - Wear ring - Anneau arasement
111	Tenuta meccanica - Mechanical seal Garniture mécanique
115-2	Anello OR - O-ring - Bague OR
115-3	Anello OR - O-ring - Bague OR
115-1	Anello OR - O-ring - Bague OR
117-1	Guarnizione - Gasket - Joint
117-2	Guarnizione - Gasket - Joint
117-3	Guarnizione - Gasket - Joint
135	Rondella - Washer - Rondelle d'étanchiété
277	Anello tenuta - V-ring - Joint de garniture
811	Cavo - Cable - Câble
849-1	Cuscinetto - Bearing - Coussinet
849-2	Cuscinetto - Bearing - Coussinet
876	Termoprotettore - Auto cut - Protection thermique

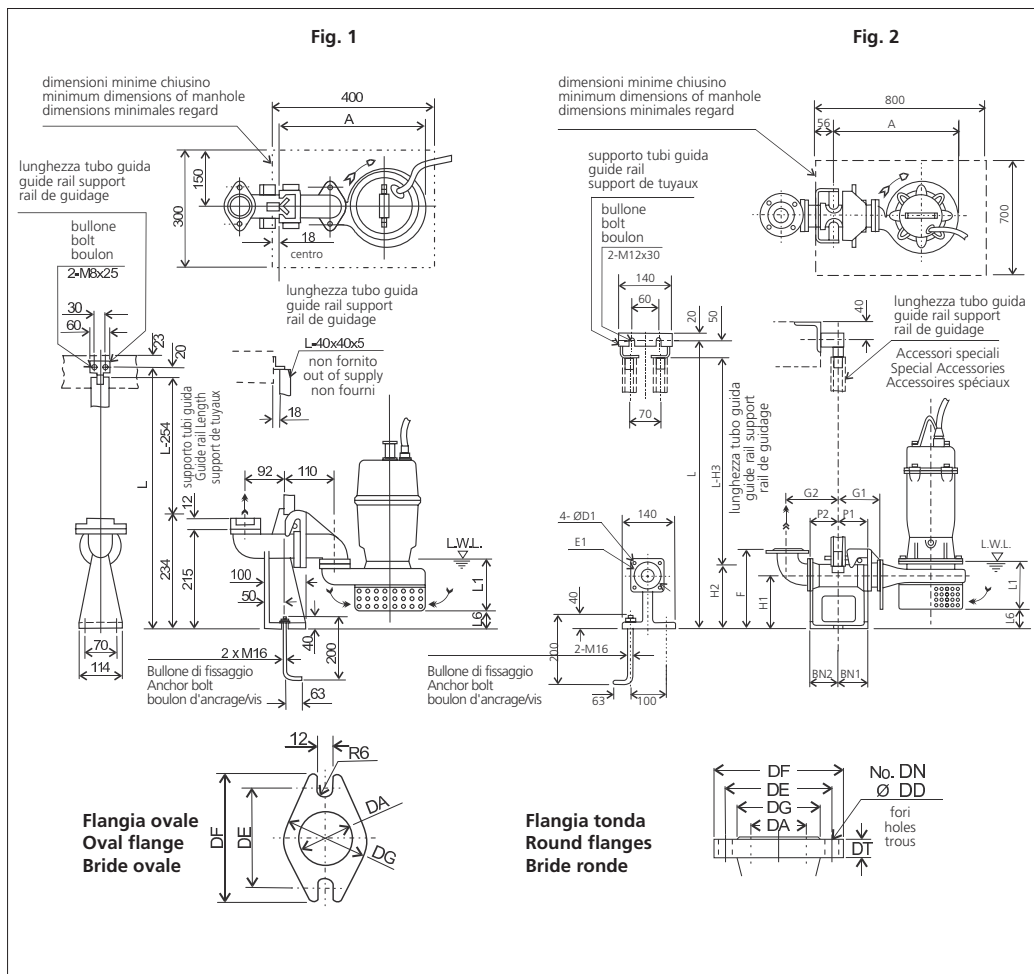
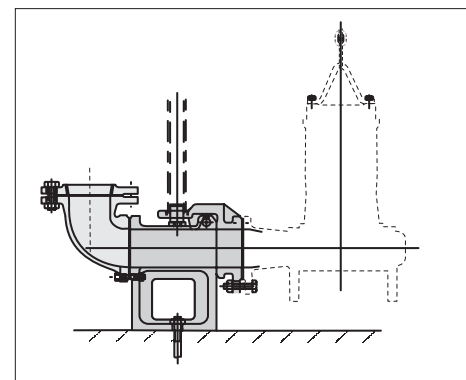


TABELLA DIMENSIONI QDC • QDC DIMENSIONS TABLE • TABLEAU DE DIMENSIONS QDC

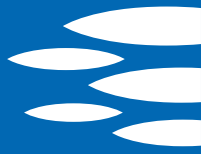
DA	Modello Model Modèle	Fig.	Tipo Flangia Flanges type Type bride	[kW]	DA	A	P1	P2	G1	G2	F	H1	H2	H3	L1 (*)	L6	BN1	BN2	D1	E1	QDC Mod.	[kg]
50	50DS53.7	2	Tonda • Round • Ronde	2.2	50	415	78	80	115	135	230	135	165	215	160	32	75	80	12	120	LM50	11

**MODELLO KIT SCIVOLO DISCESA (QDC)
QDC MODEL
MODÈLE KIT PIED D'ASSISE (QDC)
LM 50**



**EBARA**

65DS51.5



GIRANTE SEMI-APERTA A RASAMENTO SEMI-OPEN IMPELLER ROUE SEMI-OUVERTE

S.C. 12/12 65DS51.5

CURVE DI PRESTAZIONE • PERFORMANCE CURVES • COURBES DE PERFORMANCE

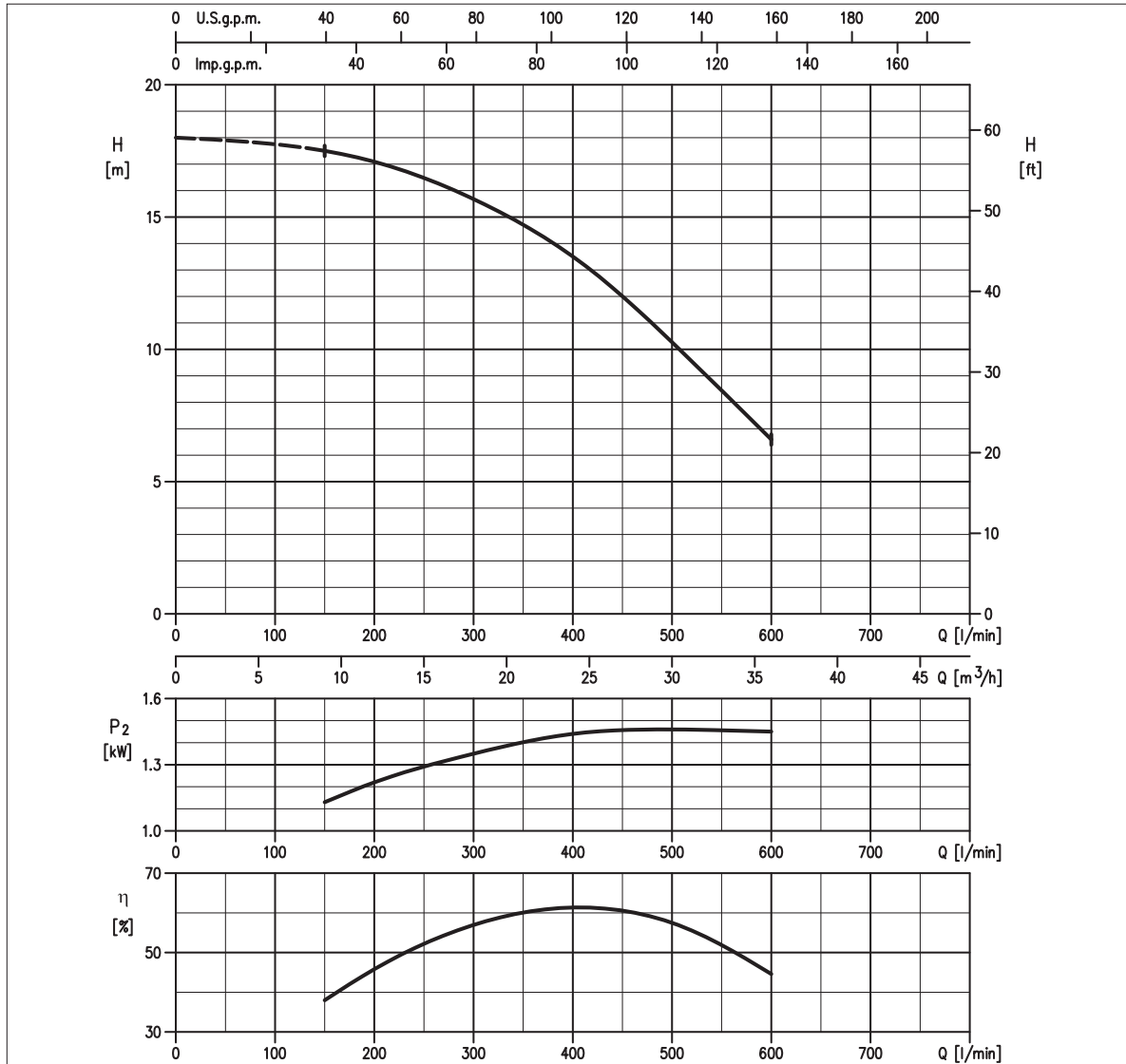


TABELLA PRESTAZIONI • PERFORMANCE TABLE • TABLEAU DE PERFORMANCES

Modello Model Modèle	P ₂		Q = Portata / Flow rate / Débit																					
	[HP]	[kW]	l/min 70	100	150	200	250	300	400	450	473	500	550	580	600	700	800	950	1000	1170	1200	1250	1400	
65DS51.5	2	1.5	-	-	17,5	17,1	16,5	15,7	13,5	12	11,2	10,3	8,5	7,3	6,6	-	-	-	-	-	-	-	-	-

H = Prevalenza / Head / Hauteur manometrique totale [m]

IDRAULICA • HYDRAULIC • HYDRAULIQUE

Girante Impeller Roue	SEMI-APERTA SEMI-OPEN SEMI-OUVERTE
Mandata Flanges Brides	DN 65 mm
Massimo diametro passaggi liberi Maximum solid diameter Passage libre maximum	6 mm
Temperatura massima del liquido Maximum liquid temperature Température maximale du liquide	40°C
Doppia tenuta meccanica Double mechanical seal Double garniture mécanique	SiC/SiC/NBR Carb/Cer/NBR

TIPO POMPA • PUMP TYPE • TYPE DE POMPE

Peso Weight Poids	35 kg	Costruzione Construction Construction	GHISA CAST IRON FONTE
-------------------------	--------------	---	--------------------------------------

MOTORE • MOTOR • MOTEUR

Tensione Power Tension	380/415V ±10% 50 Hz	Cavo Cable Câble	10 m
Avviamento ora Starts per hour Nombre de démarrages par huere	10	P ₂	1.5 kW
Classe di isolamento Insulation class Classe d'isolation	F	Voltaggio	380 V 400 V 415 V
Grado di protezione Protection degree Indice de protection	IP 68	Corrente di avviamento Start Current Ampérage au démarrage	20,5 A 21,1 A 22,5 A
		Corrente 100% Current 100% Ampérage 100%	3,70 A 3,3 A 3,3 A
		Velocità di rotazione (rpm) Rotation speed (rpm) Vitesse de rotation (rpm)	2850

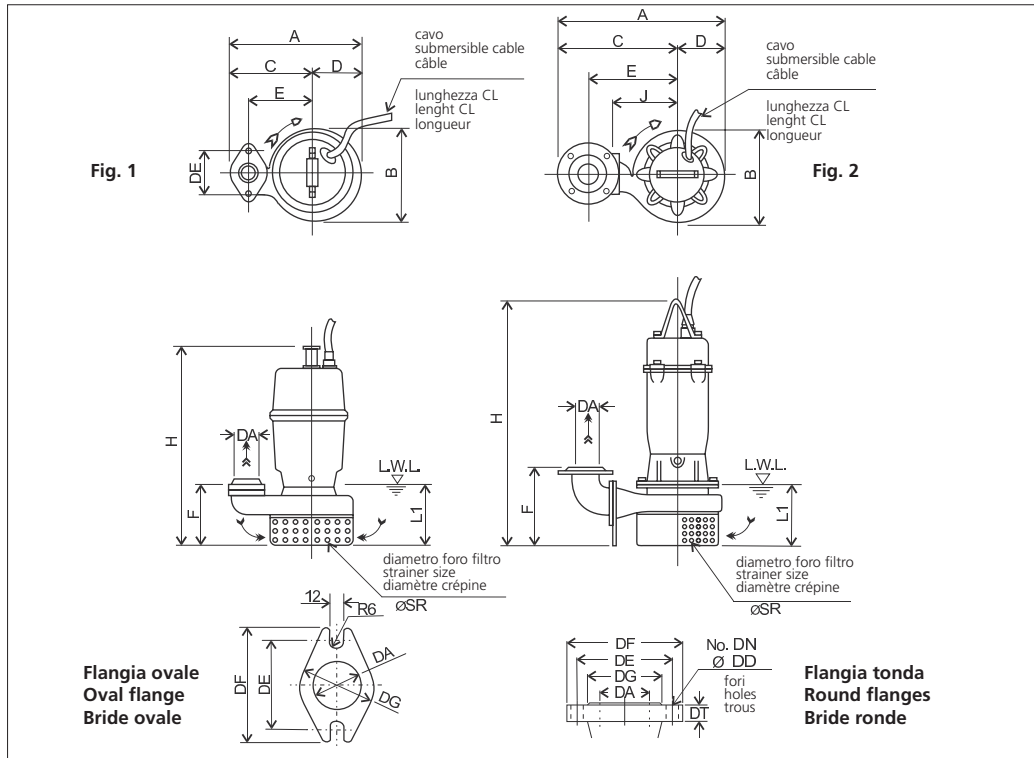


EBARA

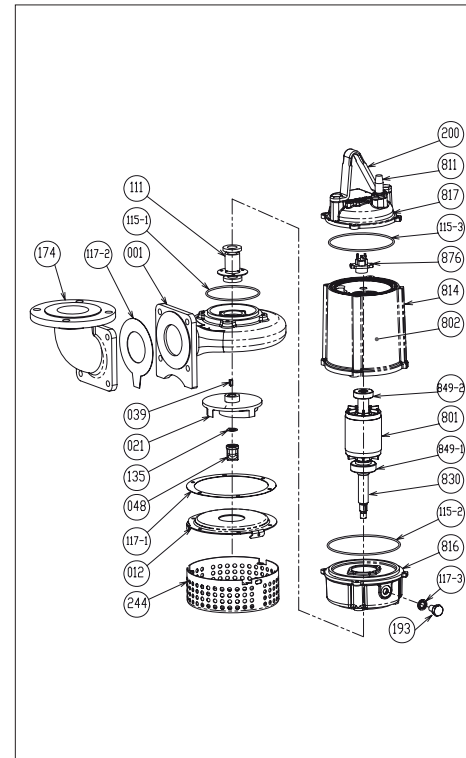
65DS51.5



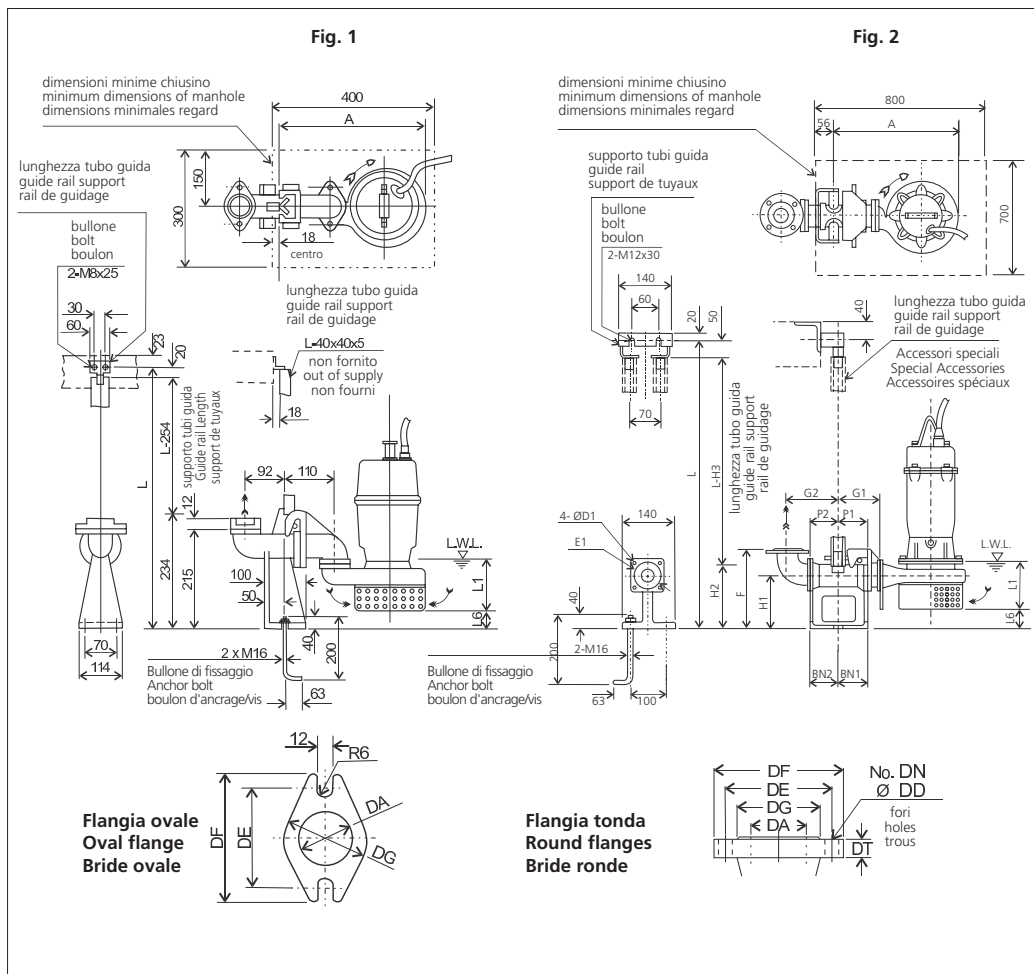
DIMENSIONI • DIMENSIONS • DIMENSIONS



RICAMBI • REPLACEMENT PARTS • PIÈCES DE RECHANGE



001	Corpo pompa - Pump casing - Corps de la pompe
021	Girante - Impeller - Roue
039	Linguetta - Key - Languette
048	Dado girante - Nut - Écrou roue
111	Tenuta meccanica - Mechanical seal Garniture mécanique
115-2	Anello OR - O-ring - Bague OR
115-3	Anello OR - O-ring - Bague OR
115-1	Anello OR - O-ring - Bague OR
117-1	Guarnizione - Gasket - Joint
117-2	Guarnizione - Gasket - Joint
117-3	Guarnizione - Gasket - Joint
135	Rondella - Washer - Rondelle d'étanchiété
811	Cavo - Cable - Câble
849-1	Cuscinetto - Bearing - Coussinet
849-2	Cuscinetto - Bearing - Coussinet
876	Termoprotettore - Auto cut - Protection thermique



MODELLO KIT SCIVOLO DISCESA (QDC)
QDC MODEL
MODÈLE KIT PIED D'ASSISE (QDC)
LM 65

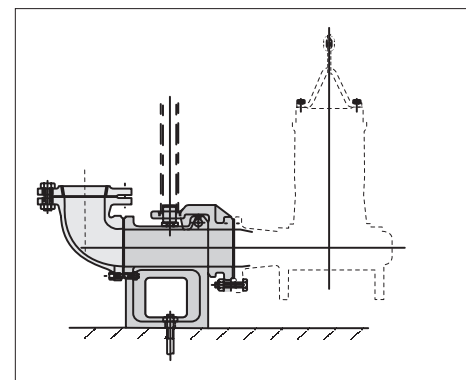
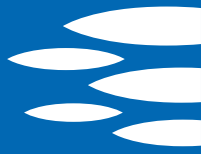


TABELLA DIMENSIONI QDC • QDC DIMENSIONS TABLE • TABLEAU DE DIMENSIONS QDC

DA	Modello Model Modèle	Fig.	Tipo Flangia Flanges type Type bride	[kW]	DA	A	P1	P2	G1	G2	F	H1	H2	H3	L1 (*)	L6	BN1	BN2	D1	E1	QDC Mod.	[kg]
65	65DS51.5	2	Tonda • Round • Ronde	1.5	65	374	75	95	120	160	250	145	190	240	120	53	75	95	12	140	LM65	14

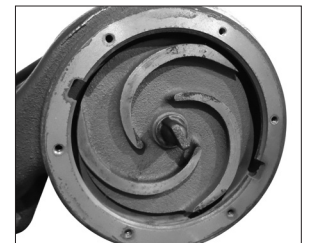
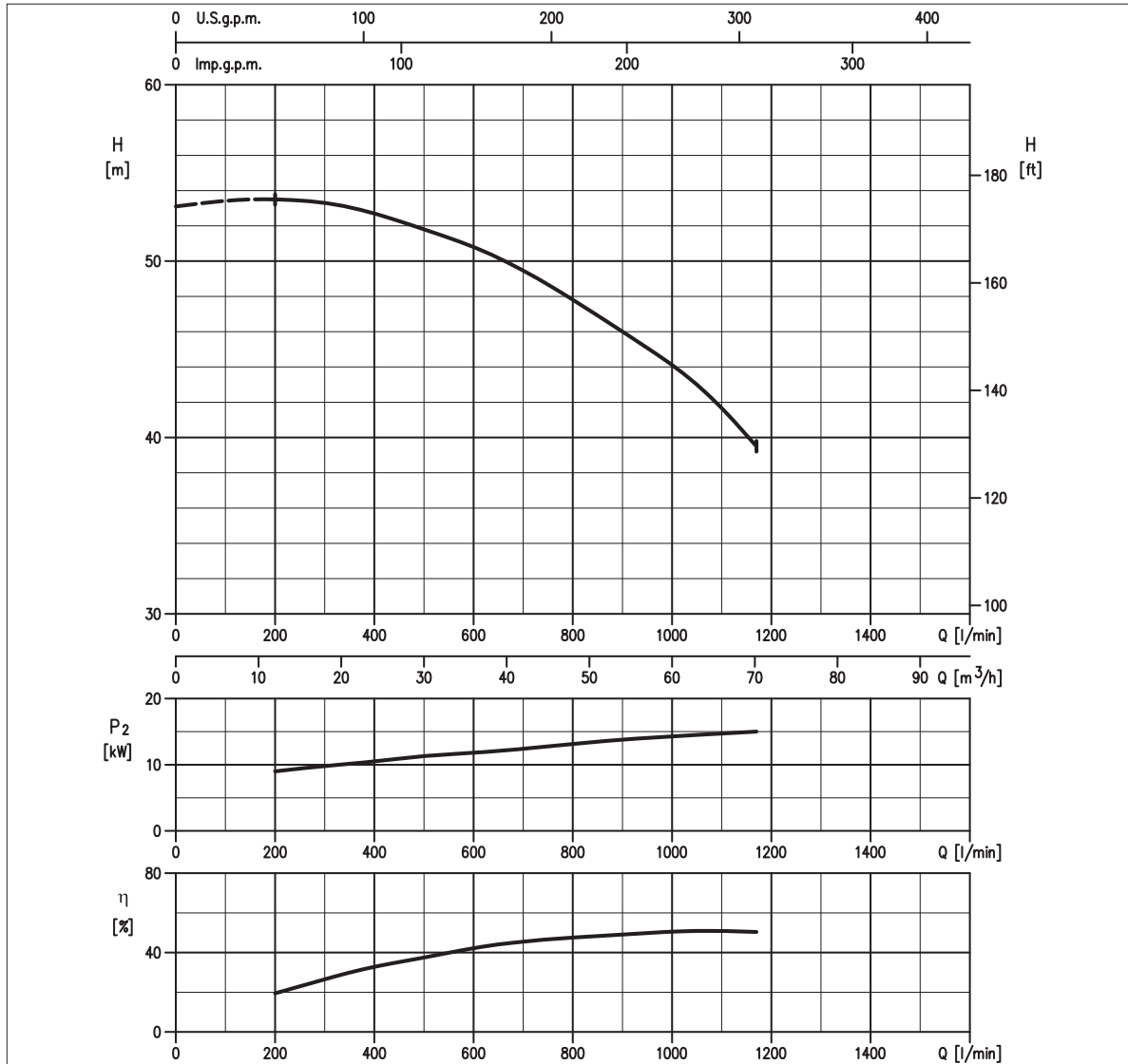
**EBARA**

65DSF515.9 (230)



GIRANTE SEMI-APERTA A RASAMENTO
SEMI-OPEN IMPELLER
ROUE SEMI-OUVERTE

S.C. 12/12 65DSF515.9 (230)

CURVE DI PRESTAZIONE • PERFORMANCE CURVES • COURBES DE PERFORMANCE**TABELLA PRESTAZIONI • PERFORMANCE TABLE • TABLEAU DE PERFORMANCES**

Modello Model Modèle	P ₂		Q = Portata / Flow rate / Débit																					
	[HP]	[kW]	l/min 70	100	150	200	250	300	400	450	473	500	550	580	600	700	800	950	1000	1170	1200	1250	1400	
65DSF515.9	21,5	15,9	-	-	-	54	53,5	53,5	52,5	52	52	52	51,5	51	51	49,5	48	45	44	39,5	-	-	-	-

H = Prevalenza / Head / Hauteur manometrique totale [m]

IDRAULICA • HYDRAULIC • HYDRAULIQUE

Girante Impeller Roue	SEMI-APERTA SEMI-OPEN SEMI-OUVERTE
Mandata Flanges Brides	DN 65 mm
Massimo diametro passaggi liberi Maximum solid diameter Passage libre maximum	10 mm
Temperatura massima del liquido Maximum liquid temperature Température maximale du liquide	40°C
Doppia tenuta meccanica Double mechanical seal Double garniture mécanique	SiC/SiC/NBR Carb/Cer/NBR

TIPO POMPA • PUMP TYPE • TYPE DE POMPE

Peso Weight Poids	200 kg	Costruzione Construction Construction	GHISA CAST IRON FONTE
-------------------------	---------------	---	--------------------------------------

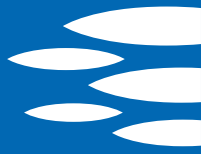
MOTORE • MOTOR • MOTEUR

Tensione Power Tension	400/690V ±10% 50 Hz	Cavo Cable Câble	10 m
Avviamento ora Starts per hour Nombre de démarrages par huere	15	P ₂	15.9 kW
Classe di isolamento Insulation class Classe d'isolation	H	Corrente di avviamento Start Current Ampérage au démarrage	171 A
Grado di protezione Protection degree Indice de protection	IP 68	Corrente 100% Current 100% Ampérage 100%	30 A
		Velocità di rotazione (rpm) Rotation speed (rpm) Vitesse de rotation (rpm)	2850

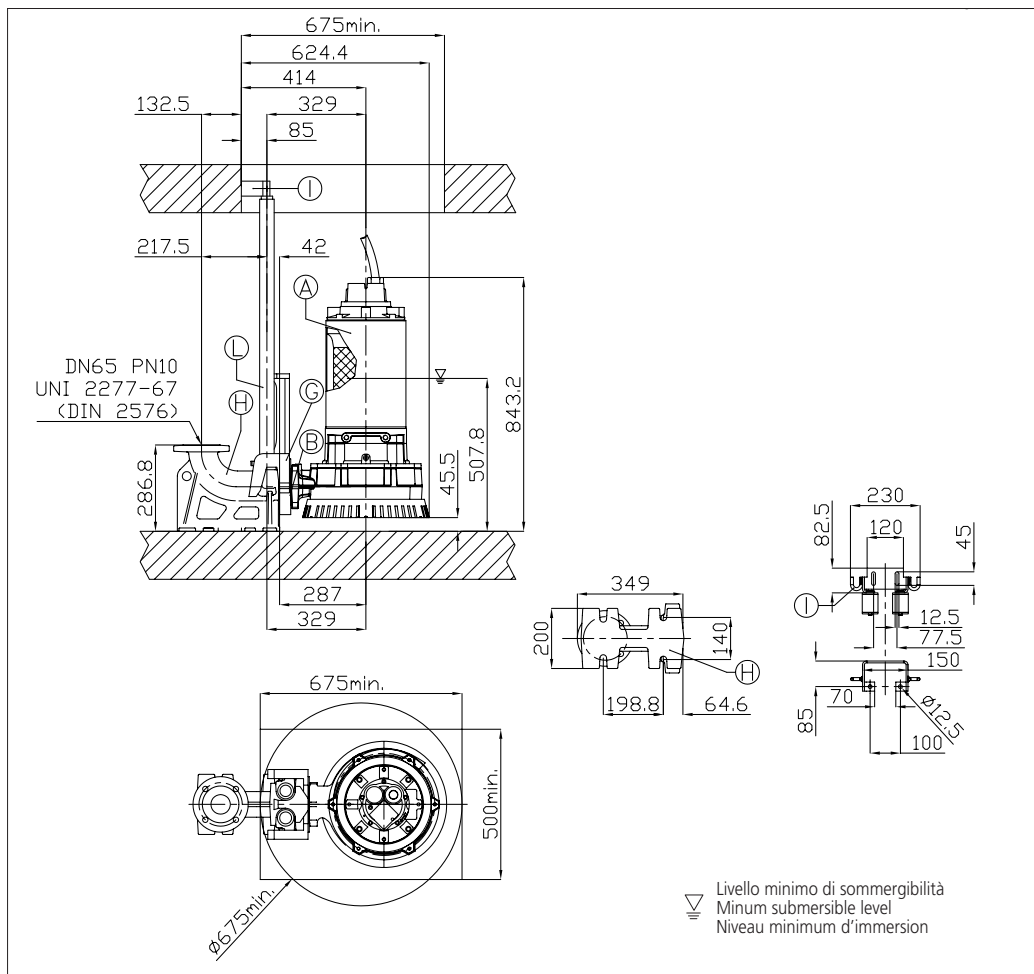
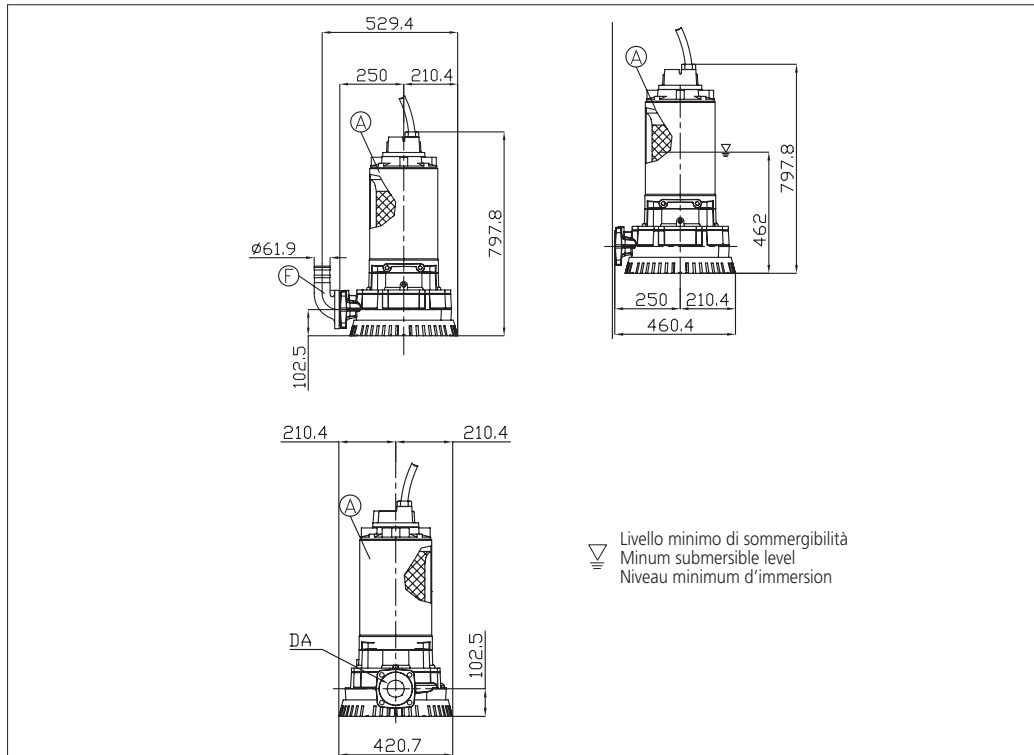


EBARA

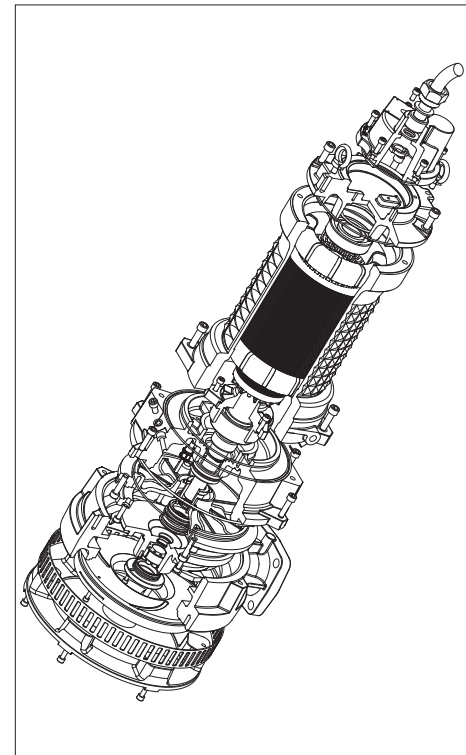
65DSF515.9 (230)



DIMENSIONI • DIMENSIONS • DIMENSIONS



RICAMBI • REPLACEMENT PARTS • PIÈCES DE RECHANGE



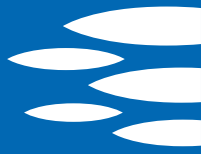
<p>KIT RIPARAZIONE ORDINARIA: O-ring, Gommini, Tenute meccaniche Paraolio, Rosette tappo olio ORDINARY REPAIR KIT: O-ring, Glands, Mechanical seals, Lip seals, Oil plug washers KIT DE RÉPARATION ORDINAIRE: Joint torique, Bouchon caoutchouc, Garniture mécanique, Joint à lèvres, Bouchon pour chambre à huile</p>	
<p>KIT RIPARAZIONE COMPLETA: O-ring, Gommini, Tenute meccaniche, Paraolio, Rosette tappo olio, Anelli cromati, Cavo elettrico, Molla precarico, Cuscinetti, Anelli seeger COMPLETE REPAIR KIT: O-ring, Glands, Mechanical seals, Lip seals, Oil plug washers, Chromate rings, Electric cable, Pre-loading spring, Bearings, Circlips KIT RÉPARATION COMPLET: Joint torique, Bouchon caoutchouc, Garniture mécanique, Joint à lèvres, Bouchon pour chambre à huile, Joint chromé, Cable électrique, Ressort, Roulement, Circlips</p>	
<p>Girante Impeller Roue</p>	<p>230 mm</p>

**SELEZIONE QDC
SELECTION QDC
SÉLECTION QDC**

<p>Modello Kit scivolo discesa QDC Model Modèle Kit pied d'assise PA DN65/15</p>	
<p>Gomito/Curva di mandata Elbow Coude/courbe de sortie CU DN65 con portagomma with hose union avec tuyau</p>	
<p>Treppiede Tripod Tripod TP 65</p>	

TABELLA DIMENSIONI QDC • QDC DIMENSIONS TABLE • TABLEAU DE DIMENSIONS QDC

DA	Modello • Model • Modèle	[kW]	Peso • Weight • Poids [kg]
DN65	65DSF515.9 (230)	15.9	200

**EBARA****80DS52.2**

GIRANTE SEMI-APERTA A RASAMENTO
SEMI-OPEN IMPELLER
ROUE SEMI-OUVERTE

S.C. 12/12 80DS52.2

CURVE DI PRESTAZIONE • PERFORMANCE CURVES • COURBES DE PERFORMANCE

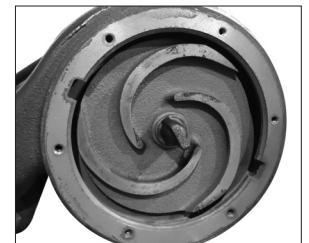
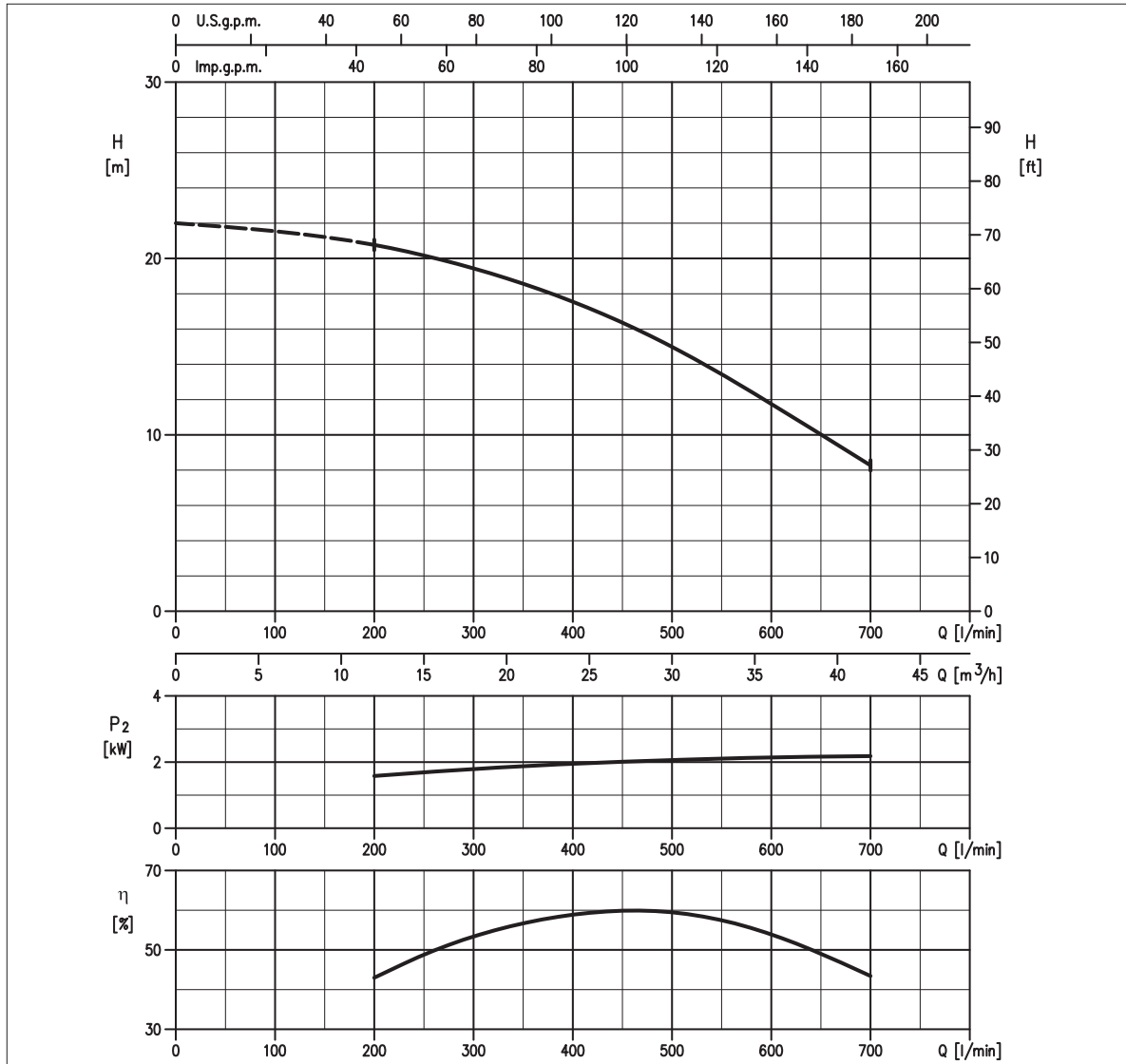


TABELLA PRESTAZIONI • PERFORMANCE TABLE • TABLEAU DE PERFORMANCES

Modello Model Modèle	P ₂		Q = Portata / Flow rate / Débit																					
	[HP]	[kW]	l/min 70	100	150	200	250	300	400	450	473	500	550	580	600	700	800	950	1000	1170	1200	1250	1400	
80DS52.2	3	2.2	-	-	-	20,8	20,2	19,4	17,6	16,4	15,8	15	13,4	12,5	11,8	8,3	-	-	-	-	-	-	-	-

H = Prevalenza / Head / Hauteur manometrique totale [m]

IDRAULICA • HYDRAULIC • HYDRAULIQUE

Girante Impeller Roue	SEMI-APERTA SEMI-OPEN SEMI-OUVERTE
Mandata Flanges Brides	DN 80 mm
Massimo diametro passaggi liberi Maximum solid diameter Passage libre maximum	7 mm
Temperatura massima del liquido Maximum liquid temperature Température maximale du liquide	40°C
Doppia tenuta meccanica Double mechanical seal Double garniture mécanique	SiC/SiC/NBR Carb/Cer/NBR

TIPO POMPA • PUMP TYPE • TYPE DE POMPE

Peso Weight Poids	59 kg	Costruzione Construction Construction	GHISA CAST IRON FONTE
-------------------------	--------------	---	--------------------------------------

MOTORE • MOTOR • MOTEUR

Tensione Power Tension	380/415V ±10% 50 Hz	Cavo Cable Câble	10 m
Avviamento ora Starts per hour Nombre de démarrages par huere	10	P ₂	2.2 kW
Classe di isolamento Insulation class Classe d'isolation	F	Voltaggio	380 V 400 V 415 V
Grado di protezione Protection degree Indice de protection	IP 68	Corrente di avviamento Start Current Ampérage au démarrage	28,7 A 30,0 A 31,5 A
		Corrente 100% Current 100% Ampérage 100%	5,10 A 5,00 A 4,60 A
		Velocità di rotazione (rpm) Rotation speed (rpm) Vitesse de rotation (rpm)	2850

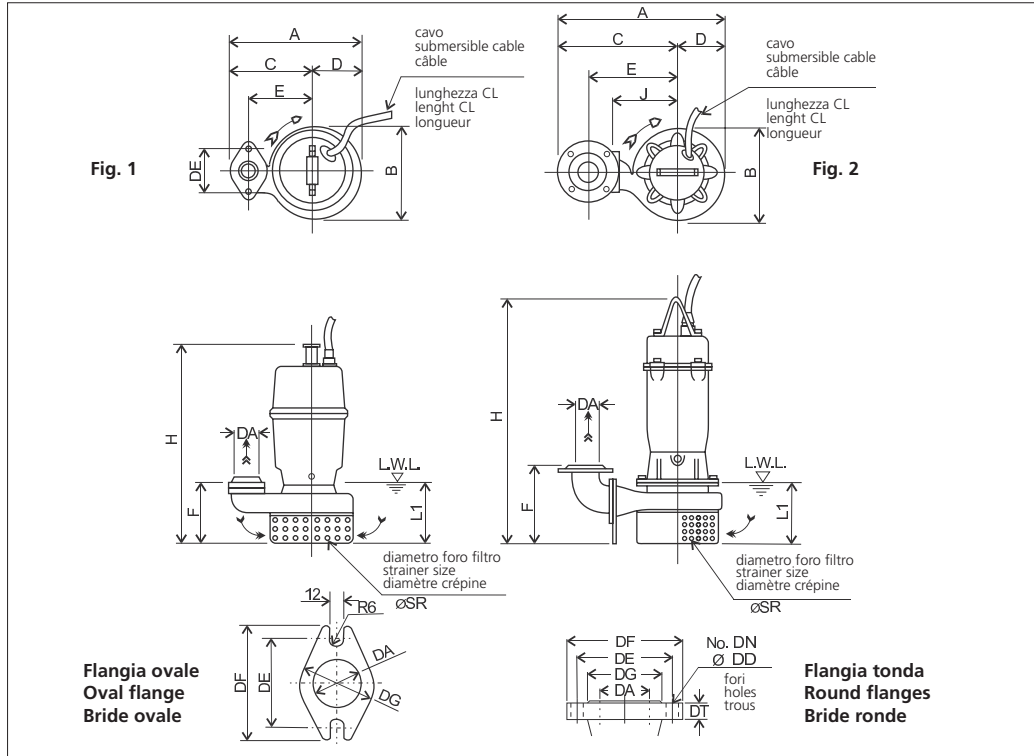


EBARA

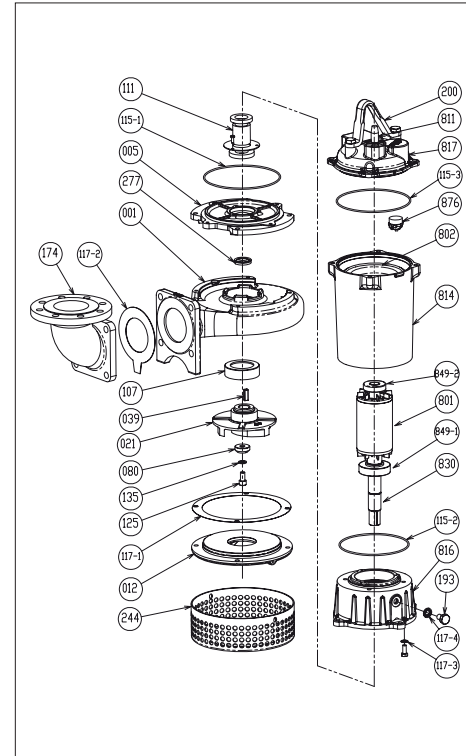
80DS52.2



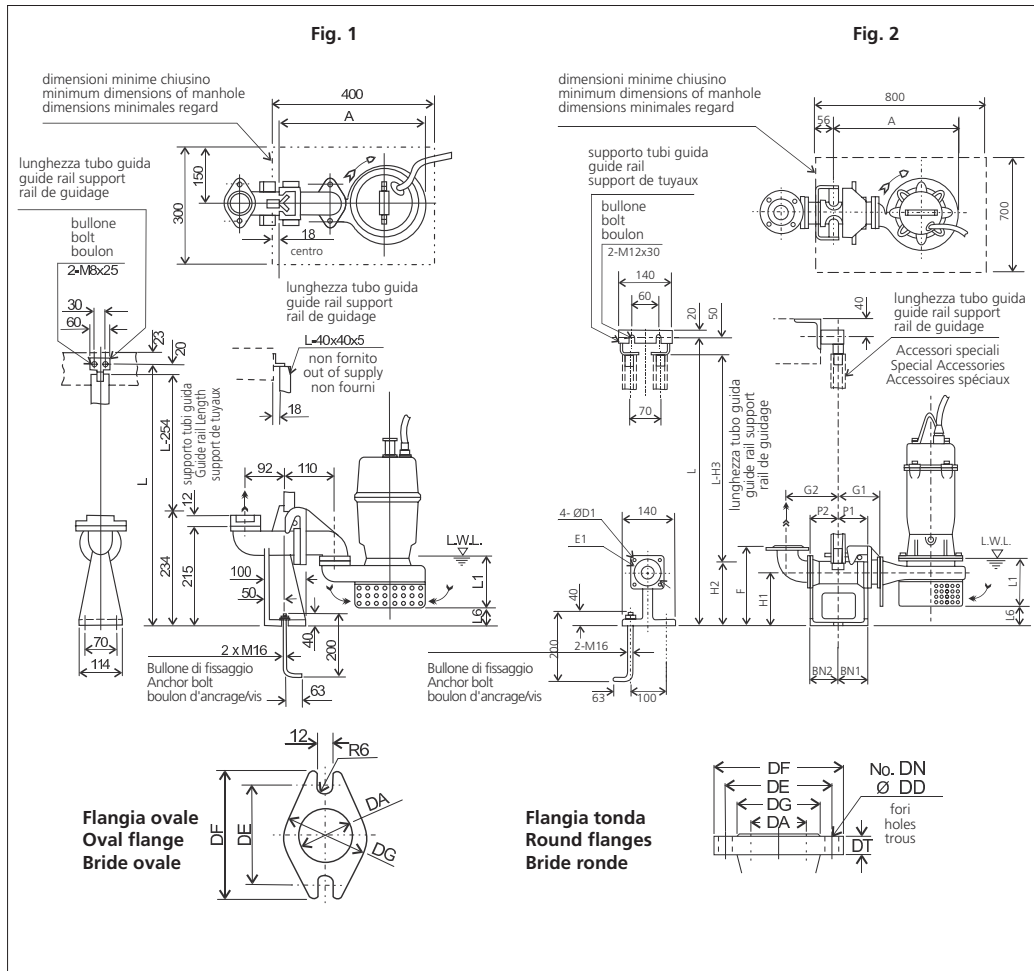
DIMENSIONI • DIMENSIONS • DIMENSIONS



RICAMBI • REPLACEMENT PARTS • PIÈCES DE RECHANGE



001	Corpo pompa - Pump casing - Corps de la pompe
021	Girante - Impeller - Roue
039	Linguetta - Key - Languette
080	Bussola - Bushing - Bague d'usure
107	Anello di rasamento - Wear ring - Anneau arasement
111	Tenuta meccanica - Mechanical seal Garniture mécanique
115-2	Anello OR - O-ring - Bague OR
115-3	Anello OR - O-ring - Bague OR
115-1	Anello OR - O-ring - Bague OR
117-1	Guarnizione - Gasket - Joint
117-2	Guarnizione - Gasket - Joint
117-3	Guarnizione - Gasket - Joint
135	Rondella - Washer - Rondelle d'étanchiété
277	Anello tenuta - V-ring - Joint de garniture
811	Cavo - Cable - Câble
849-1	Cuscinetto - Bearing - Coussinet
849-2	Cuscinetto - Bearing - Coussinet
876	Termoprotettore - Auto cut - Protection thermique



MODELLO KIT SCIVOLO DISCESA (QDC)
QDC MODEL
MODÈLE KIT PIED D'ASSISE (QDC)
LM 80

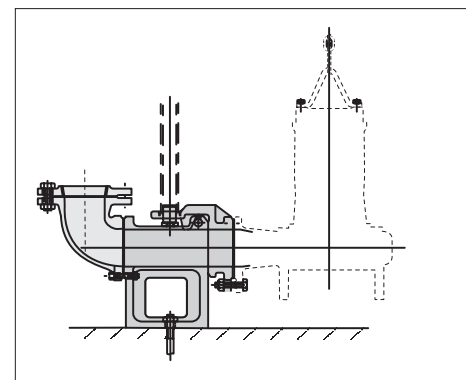
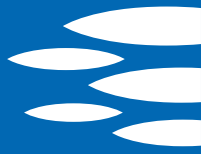


TABELLA DIMENSIONI QDC • QDC DIMENSIONS TABLE • TABLEAU DE DIMENSIONS QDC

DA	Modello Model Modèle	Fig.	Tipo Flangia Flanges type Type bride	[kW]	DA	A	P1	P2	G1	G2	F	H1	H2	H3	L1 (*)	L6	BN1	BN2	D1	E1	QDC Mod.	[kg]
80	80DS52.2	2	Tonda • Round • Ronde	2.2	80	460	75	90	125	165	285	175	230	280	160	70	75	90	15	155	LM80	17

**EBARA****80DS53.7**

GIRANTE SEMI-APERTA A RASAMENTO
SEMI-OPEN IMPELLER
ROUE SEMI-OUVERTE

S.C. 12/12 80DS53.7

CURVE DI PRESTAZIONE • PERFORMANCE CURVES • COURBES DE PERFORMANCE

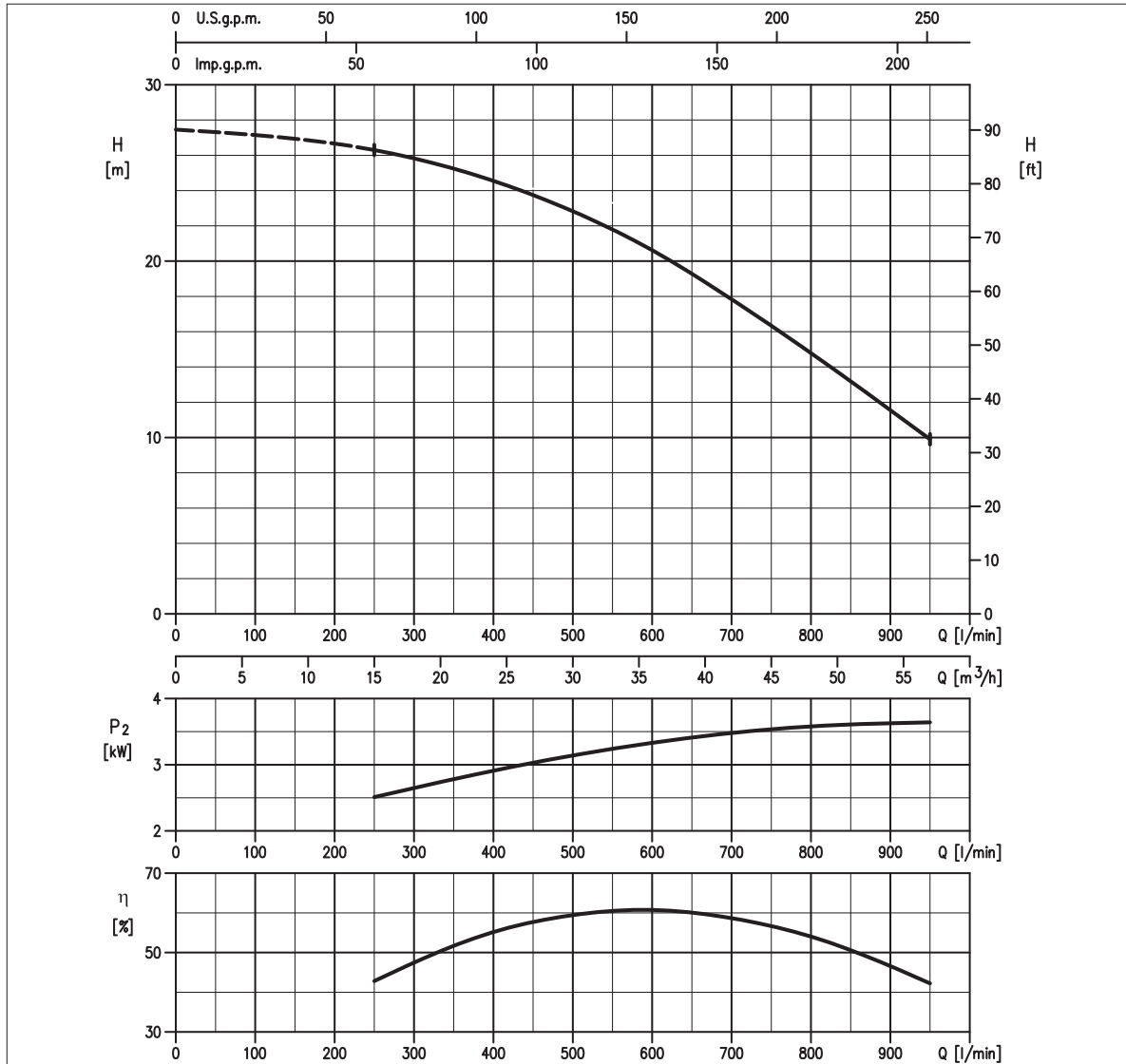


TABELLA PRESTAZIONI • PERFORMANCE TABLE • TABLEAU DE PERFORMANCES

Modello Model Modèle	P ₂		Q = Portata / Flow rate / Débit																					
	[HP]	[kW]	l/min 70	100	150	200	250	300	400	450	473	500	550	580	600	700	800	950	1000	1170	1200	1250	1400	
80DS53.7	5	3.7	-	-	-	-	26,3	25,8	24,6	23,7	23,3	22,8	21,8	21,2	20,6	17,8	14,8	9,9	-	-	-	-	-	-

H = Prevalenza / Head / Hauteur manometrique totale [m]

IDRAULICA • HYDRAULIC • HYDRAULIQUE

Girante Impeller Roue	SEMI-APERTA SEMI-OPEN SEMI-OUVERTE
Mandata Flanges Brides	DN 80 mm
Massimo diametro passaggi liberi Maximum solid diameter Passage libre maximum	7 mm
Temperatura massima del liquido Maximum liquid temperature Température maximale du liquide	40°C
Doppia tenuta meccanica Double mechanical seal Double garniture mécanique	SiC/SiC/NBR Carb/Cer/NBR

TIPO POMPA • PUMP TYPE • TYPE DE POMPE

Peso Weight Poids	64 kg	Costruzione Construction Construction	GHISA CAST IRON FONTE
-------------------------	--------------	---	--------------------------------------

MOTORE • MOTOR • MOTEUR

Tensione Power Tension	380/415V ±10% 50 Hz	Cavo Cable Câble	10 m
Avviamento ora Starts per hour Nombre de démarrages par huere	10	P ₂	3.7 kW
Classe di isolamento Insulation class Classe d'isolation	F	Voltaggio	380 V 400 V 415 V
Grado di protezione Protection degree Indice de protection	IP 68	Corrente di avviamento Start Current Ampérage au démarrage	51,2 A 51,0 A 53,0 A
		Corrente 100% Current 100% Ampérage 100%	8,80 A 7,80 A 7,80 A
		Velocità di rotazione (rpm) Rotation speed (rpm) Vitesse de rotation (rpm)	2850

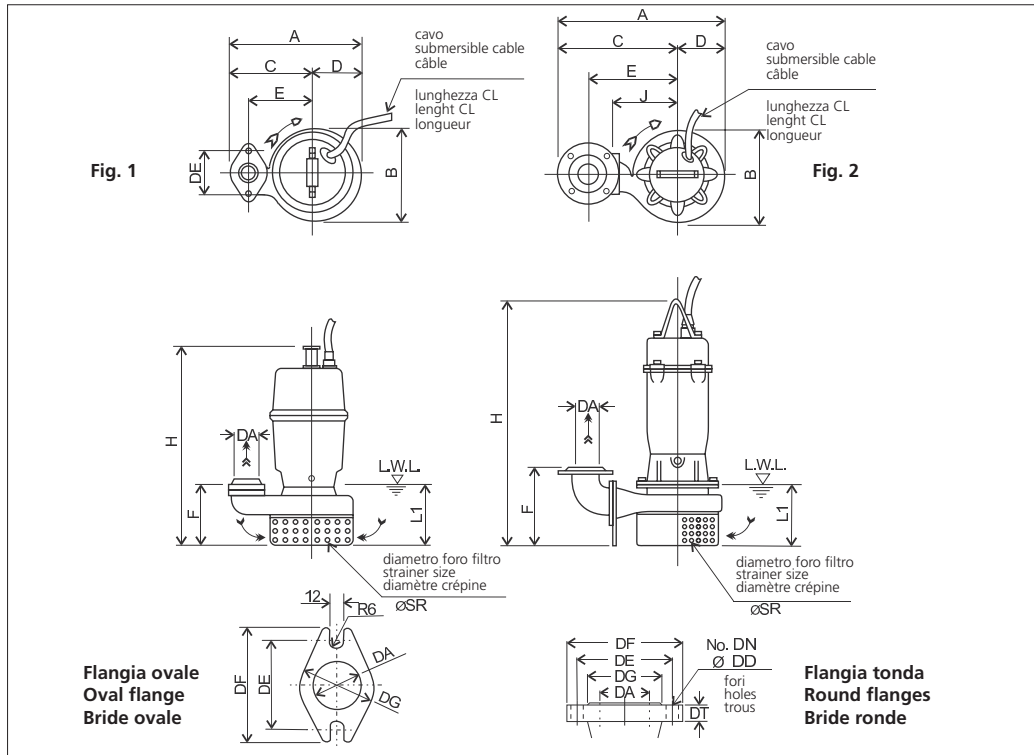


EBARA

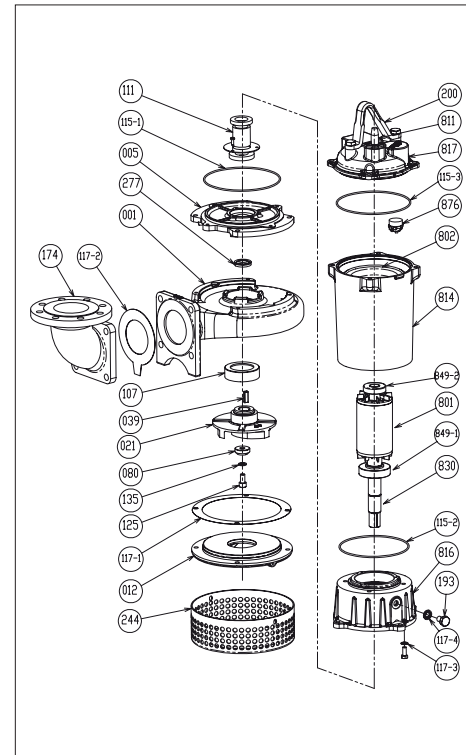
80DS53.7



DIMENSIONI • DIMENSIONS • DIMENSIONS



RICAMBI • REPLACEMENT PARTS • PIÈCES DE RECHANGE



001	Corpo pompa - Pump casing - Corps de la pompe
021	Girante - Impeller - Roue
039	Linguetta - Key - Languette
080	Bussola - Bushing - Bague d'usure
107	Anello di rasamento - Wear ring - Anneau arasement
111	Tenuta meccanica - Mechanical seal Garniture mécanique
115-2	Anello OR - O-ring - Bague OR
115-3	Anello OR - O-ring - Bague OR
115-1	Anello OR - O-ring - Bague OR
117-1	Guarnizione - Gasket - Joint
117-2	Guarnizione - Gasket - Joint
117-3	Guarnizione - Gasket - Joint
135	Rondella - Washer - Rondelle d'étanchiété
277	Anello tenuta - V-ring - Joint de garniture
811	Cavo - Cable - Câble
849-1	Cuscinetto - Bearing - Coussinet
849-2	Cuscinetto - Bearing - Coussinet
876	Termoprotettore - Auto cut - Protection thermique

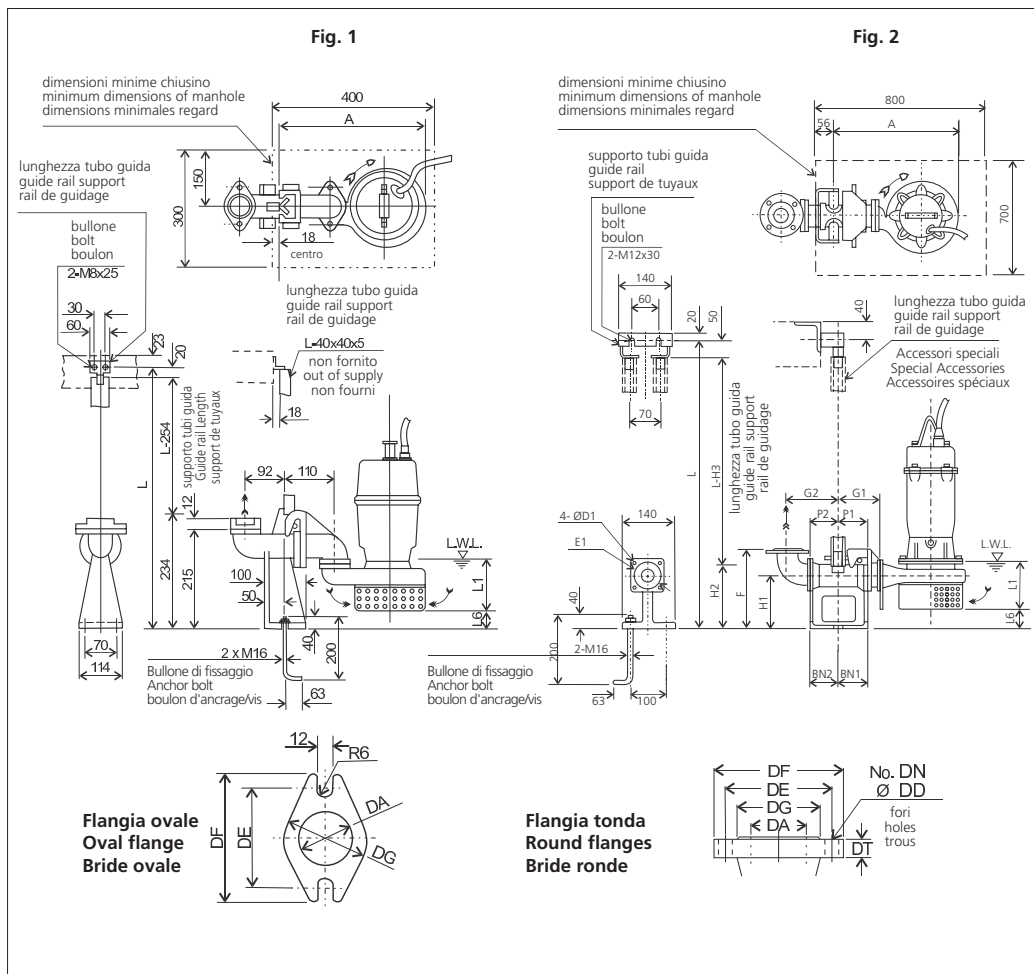
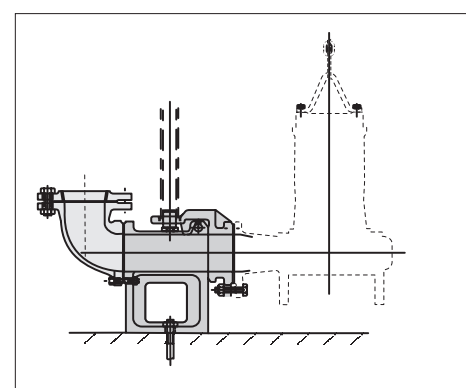


TABELLA DIMENSIONI QDC • QDC DIMENSIONS TABLE • TABLEAU DE DIMENSIONS QDC

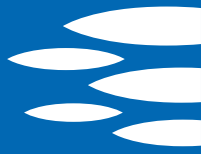
DA	Modello Model Modèle	Fig.	Tipo Flangia Flanges type Type bride	[kW]	DA	A	P1	P2	G1	G2	F	H1	H2	H3	L1 (*)	L6	BN1	BN2	D1	E1	QDC Mod.	[kg]
80	80DS53.7	2	Tonda • Round • Ronde	3.7	80	460	75	90	125	165	285	175	230	280	160	70	75	90	15	155	LM80	17

**MODELLO KIT SCIVOLO DISCESA (QDC)
QDC MODEL
MODÈLE KIT PIED D'ASSISE (QDC)
LM 80**



**EBARA**

100DS55.5



GIRANTE SEMI-APERTA A RASAMENTO SEMI-OPEN IMPELLER ROUE SEMI-OUVERTE

S.C. 12/12 100DS55.5

CURVE DI PRESTAZIONE • PERFORMANCE CURVES • COURBES DE PERFORMANCE

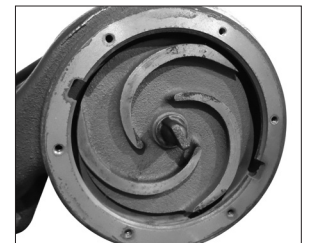
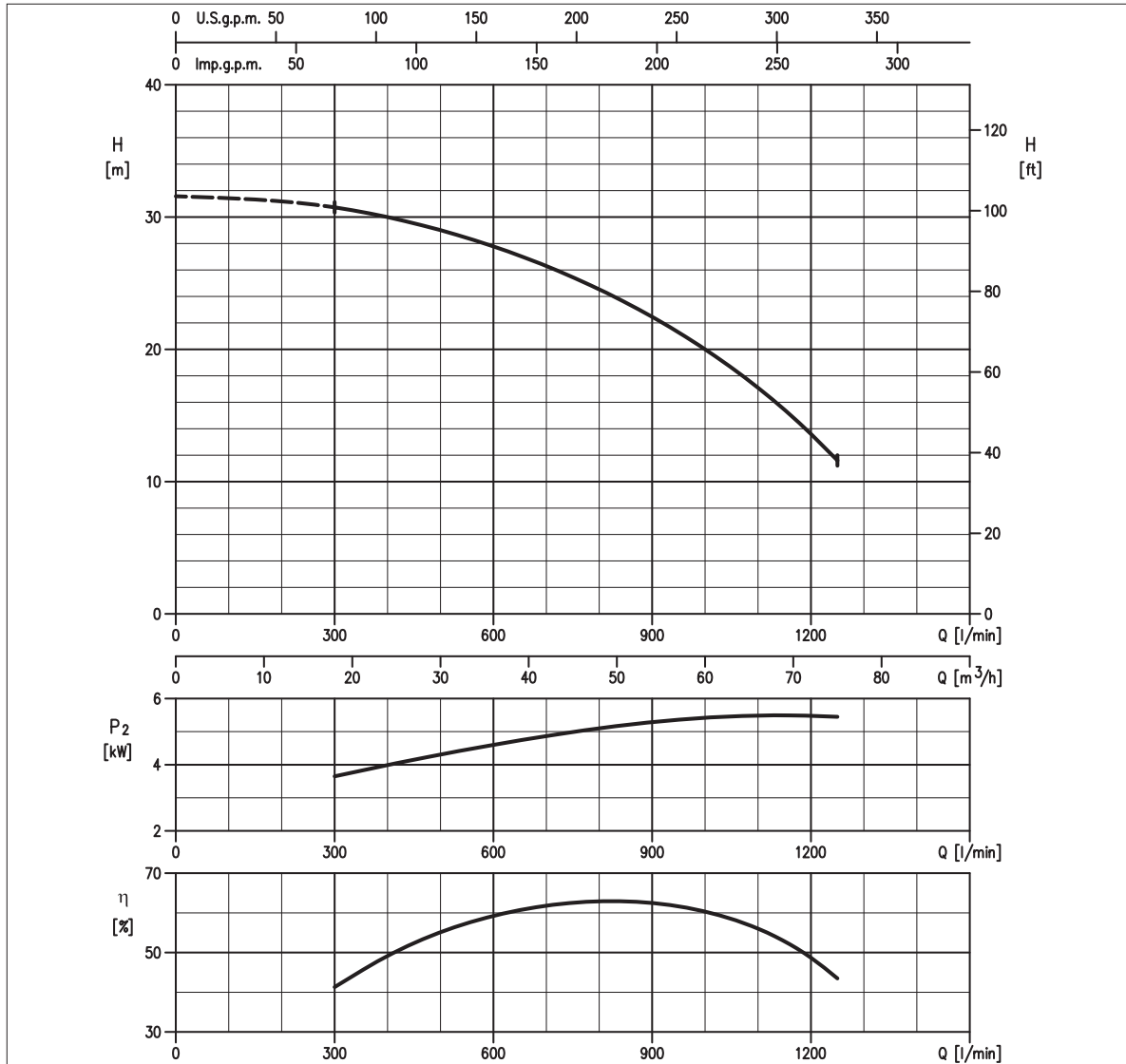


TABELLA PRESTAZIONI • PERFORMANCE TABLE • TABLEAU DE PERFORMANCES

Modello Model Modèle	P ₂		Q = Portata / Flow rate / Débit																				
	[HP]	[kW]	l/min 70	100	150	200	250	300	400	450	473	500	550	580	600	700	800	950	1000	1170	1200	1250	1400
100DS55.5	7,5	5,5	-	-	-	-	-	30,7	30	29,5	29,3	29	28,4	28	27,8	26,3	24,5	21,3	20,0	14,8	13,6	11,6	-

H = Prevalenza / Head / Hauteur manometrique totale [m]

IDRAULICA • HYDRAULIC • HYDRAULIQUE

Girante Impeller Roue	SEMI-APERTA SEMI-OPEN SEMI-OUVERTE
Mandata Flanges Brides	DN 100 mm
Massimo diametro passaggi liberi Maximum solid diameter Passage libre maximum	8 mm
Temperatura massima del liquido Maximum liquid temperature Température maximale du liquide	40°C
Doppia tenuta meccanica Double mechanical seal Double garniture mécanique	SiC/SiC/NBR Carb/Cer/NBR

TIPO POMPA • PUMP TYPE • TYPE DE POMPE

Peso Weight Poids	92 kg	Costruzione Construction Construction	GHISA CAST IRON FONTE
-------------------------	--------------	---	--------------------------------------

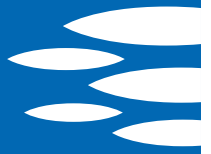
MOTORE • MOTOR • MOTEUR

Tensione Power Tension	380/415V ±10% 50 Hz	Cavo Cable Câble	10 m
Avviamento ora Starts per hour Nombre de démarrages par huere	10	P ₂	5.5 kW
Classe di isolamento Insulation class Classe d'isolation	F	Voltaggio	380 V 400 V 415 V
Grado di protezione Protection degree Indice de protection	IP 68	Corrente di avviamento Start Current Ampérage au démarrage	77 A 70 A 70 A
		Corrente 100% Current 100% Ampérage 100%	10,8 A 10,8 A 10,3 A
		Velocità di rotazione (rpm) Rotation speed (rpm) Vitesse de rotation (rpm)	2850

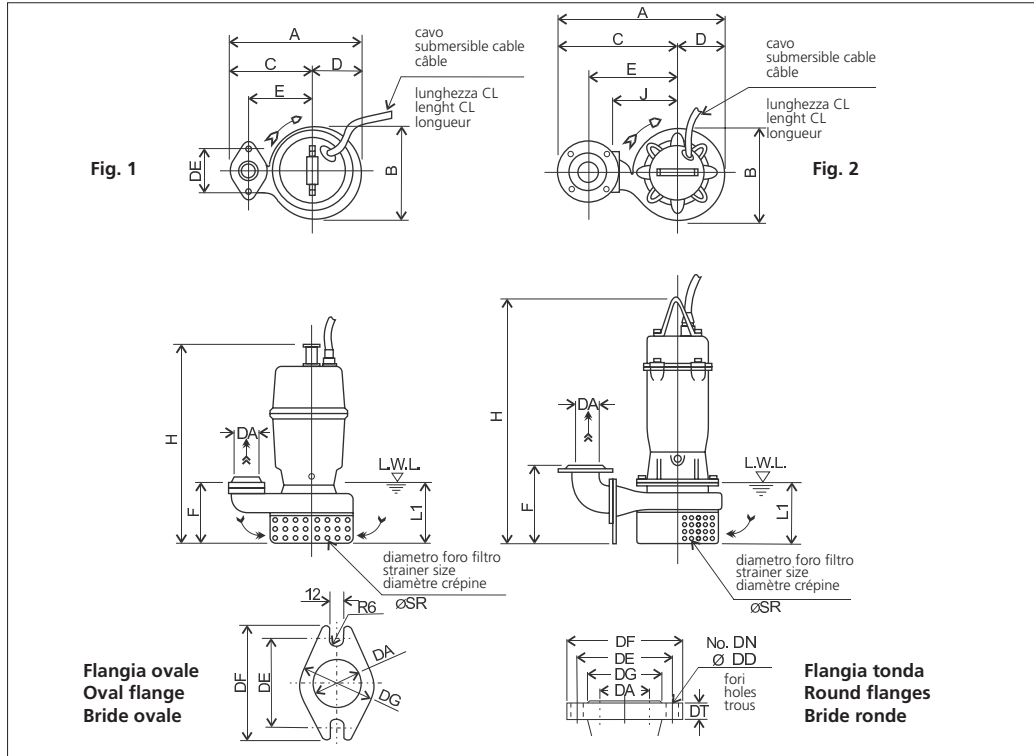


EBARA

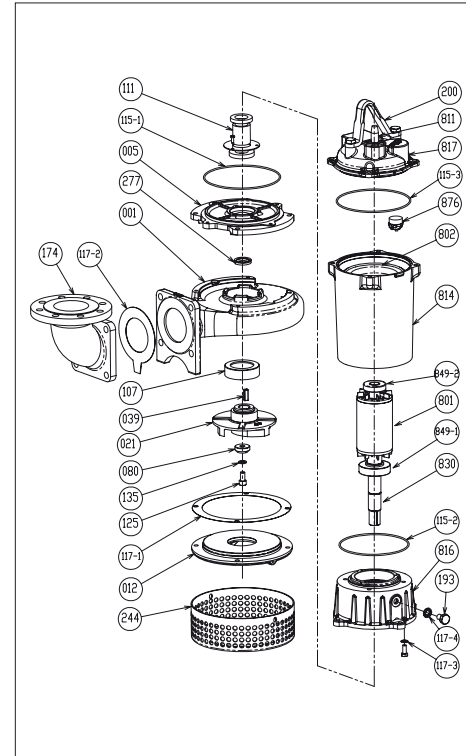
100DS55.5



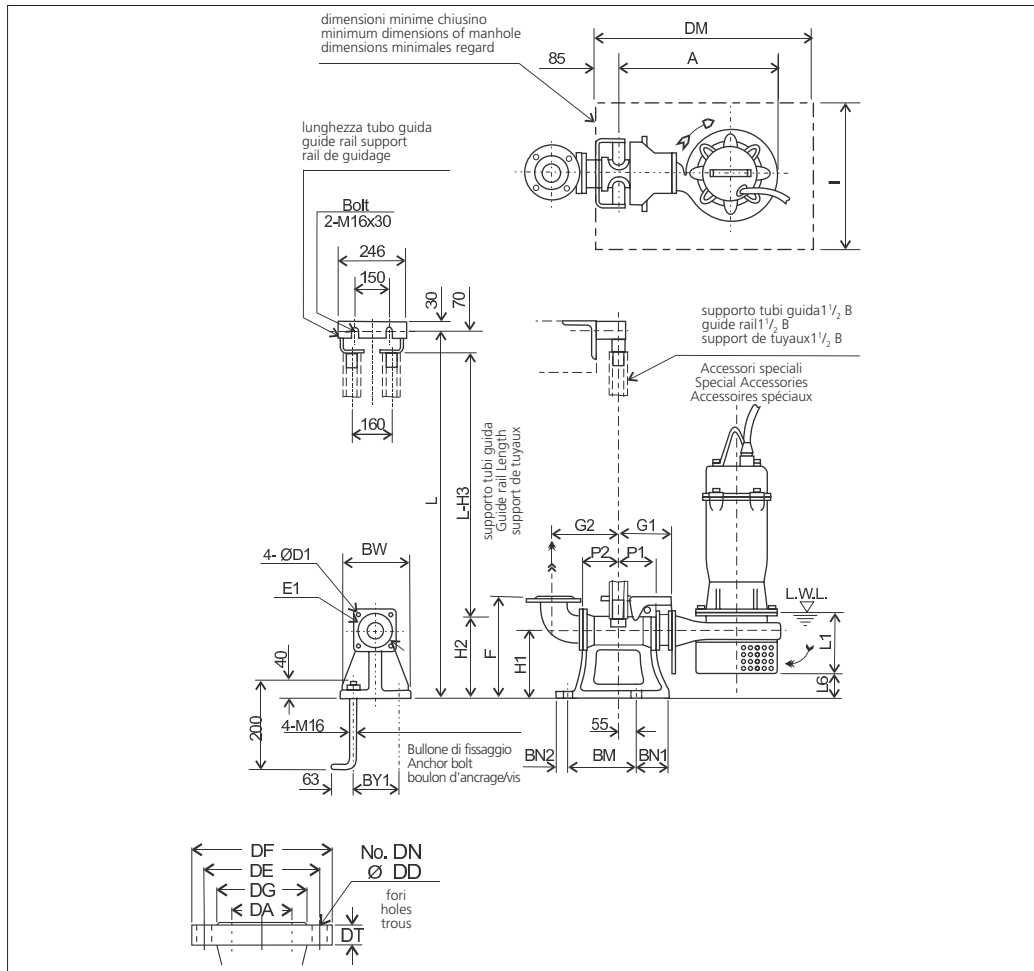
DIMENSIONI • DIMENSIONS • DIMENSIONS



RICAMBI • REPLACEMENT PARTS • PIÈCES DE RECHANGE



001	Corpo pompa - Pump casing - Corps de la pompe
021	Girante - Impeller - Roue
039	Linguetta - Key - Languette
080	Bussola - Bushing - Bague d'usure
107	Anello di rasamento - Wear ring - Anneau arasement
111	Tenuta meccanica - Mechanical seal Garniture mécanique
115-2	Anello OR - O-ring - Bague OR
115-3	Anello OR - O-ring - Bague OR
115-1	Anello OR - O-ring - Bague OR
117-1	Guarnizione - Gasket - Joint
117-2	Guarnizione - Gasket - Joint
117-3	Guarnizione - Gasket - Joint
135	Rondella - Washer - Rondelle d'étanchiété
277	Anello tenuta - V-ring - Joint de garniture
811	Cavo - Cable - Câble
849-1	Cuscinetto - Bearing - Coussinet
849-2	Cuscinetto - Bearing - Coussinet
876	Termoprotettore - Auto cut - Protection thermique



MODELLO KIT SCIVOLO DISCESA (QDC)
QDC MODEL
MODÈLE KIT PIED D'ASSISE (QDC)
LL 100

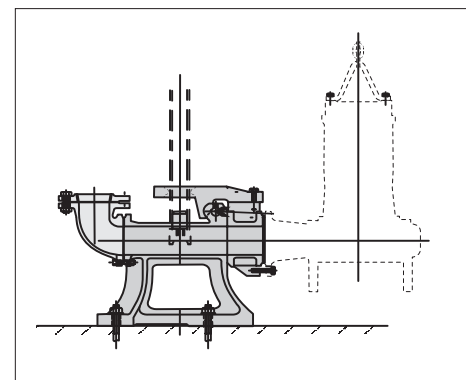


TABELLA DIMENSIONI QDC • QDC DIMENSIONS TABLE • TABLEAU DE DIMENSIONS QDC

DA	Modello Model Modèle	[kW]	A	P1	P2	G1	G2	F	H1	H2	H3	L1 (*)	L6	BN1	BN2	BM	BY1	BW	DM	I	D1	E1	QDC Mod. [kg]	
100	100DS55.5	5.5	590	105	105	185	210	365	240	265	335	200	108	100	40	220	180	230	800	700	19	175	LL100	46

**EBARA****100DS57.5**

GIRANTE SEMI-APERTA A RASAMENTO
SEMI-OPEN IMPELLER
ROUE SEMI-OUVERTE

S.C. 12/12 100DS57.5

CURVE DI PRESTAZIONE • PERFORMANCE CURVES • COURBES DE PERFORMANCE

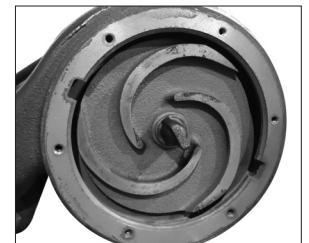
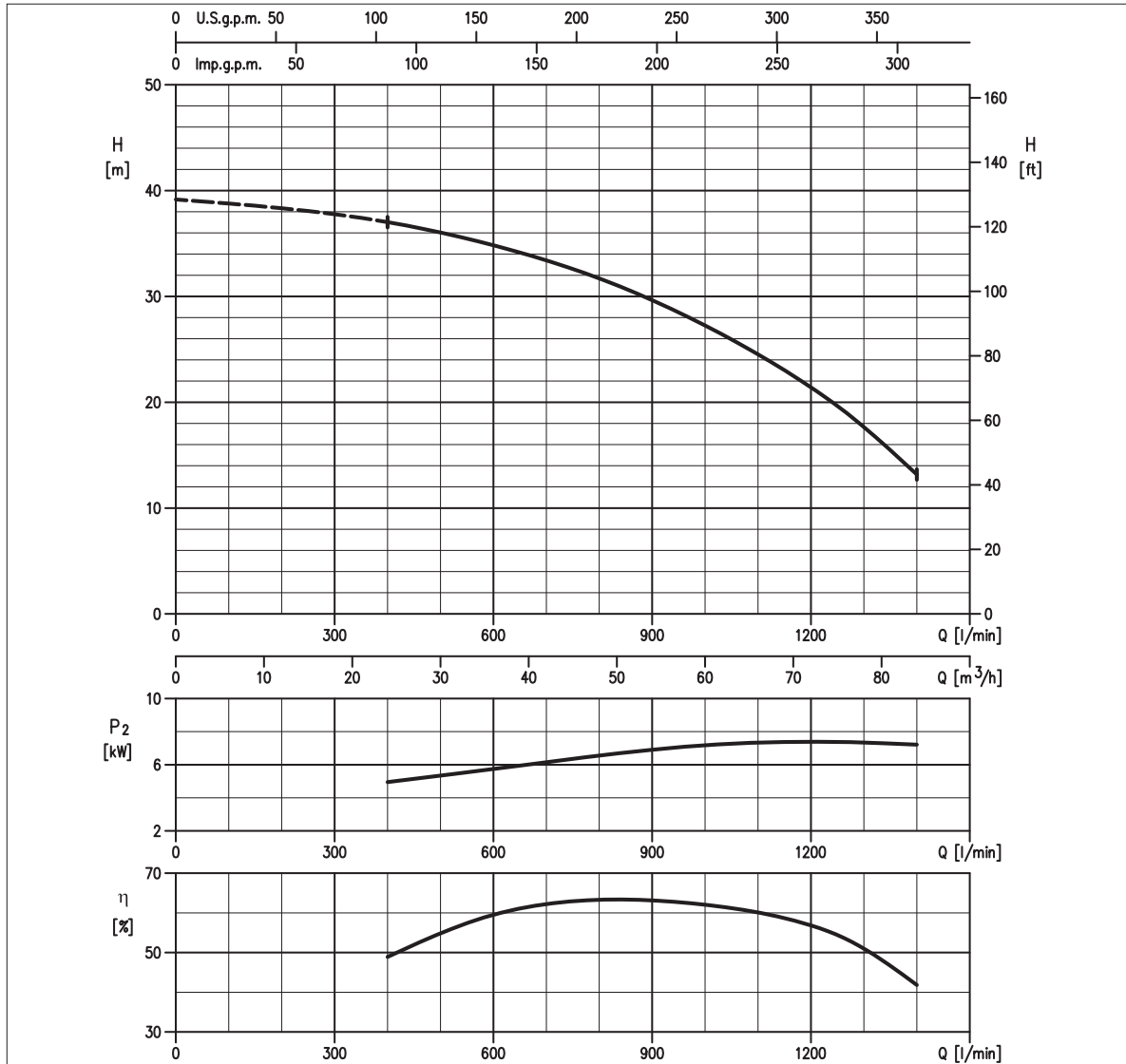


TABELLA PRESTAZIONI • PERFORMANCE TABLE • TABLEAU DE PERFORMANCES

Modello Model Modèle	P ₂		Q = Portata / Flow rate / Débit																				
	[HP]	[kW]	l/min 70	100	150	200	250	300	400	450	473	500	550	580	600	700	800	950	1000	1170	1200	1250	1400
100DS57.5	10	7.5	-	-	-	-	-	-	37	36,6	36,3	36	35,5	35,1	34,8	33,4	31,7	28,5	27,3	22,5	21,4	19,7	13,2

H = Prevalenza / Head / Hauteur manometrique totale [m]

IDRAULICA • HYDRAULIC • HYDRAULIQUE

Girante Impeller Roue	SEMI-APERTA SEMI-OPEN SEMI-OUVERTE
Mandata Flanges Brides	DN 100 mm
Massimo diametro passaggi liberi Maximum solid diameter Passage libre maximum	8 mm
Temperatura massima del liquido Maximum liquid temperature Température maximale du liquide	40°C
Doppia tenuta meccanica Double mechanical seal Double garniture mécanique	SiC/SiC/NBR Carb/Cer/NBR

TIPO POMPA • PUMP TYPE • TYPE DE POMPE

Peso Weight Poids	104 kg	Costruzione Construction Construction	GHISA CAST IRON FONTE
-------------------------	---------------	---	--------------------------------------

MOTORE • MOTOR • MOTEUR

Tensione Power Tension	380/415V ±10% 50 Hz	Cavo Cable Câble	10 m
Avviamento ora Starts per hour Nombre de démarrages par huere	10	P ₂	7.5 kW
Classe di isolamento Insulation class Classe d'isolation	F	Voltaggio	380 V 400 V 415 V
Grado di protezione Protection degree Indice de protection	IP 68	Corrente di avviamento Start Current Ampérage au démarrage	105 A 93,5 A 94 A
		Corrente 100% Current 100% Ampérage 100%	14,8 A 14,3 A 13,2 A
		Velocità di rotazione (rpm) Rotation speed (rpm) Vitesse de rotation (rpm)	2850

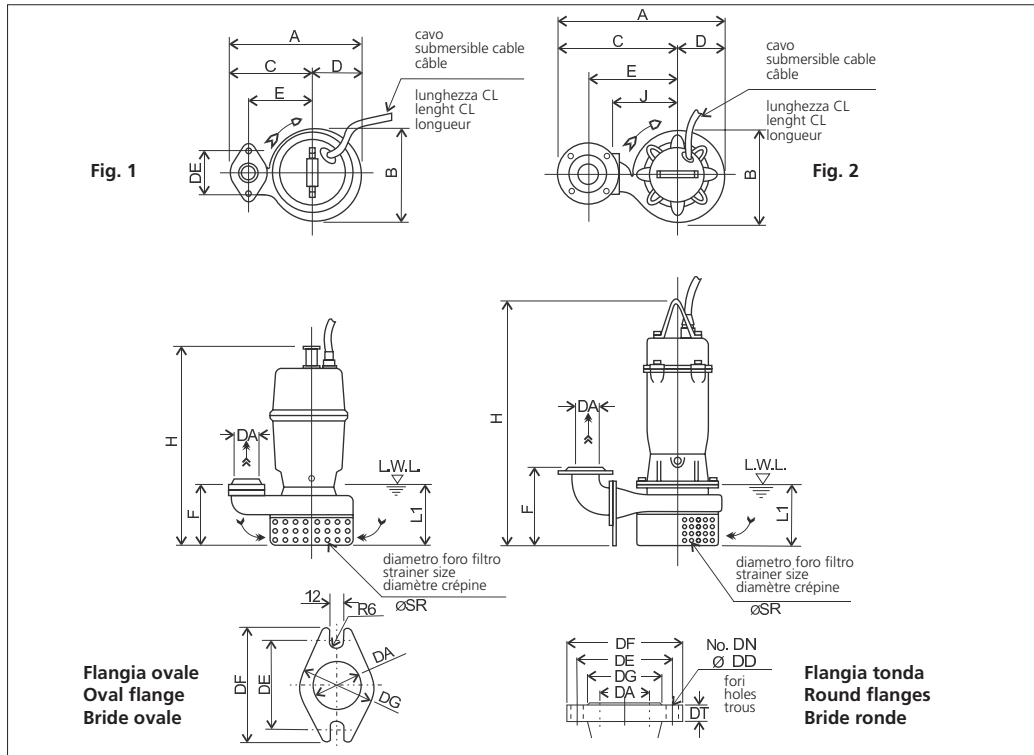


EBARA

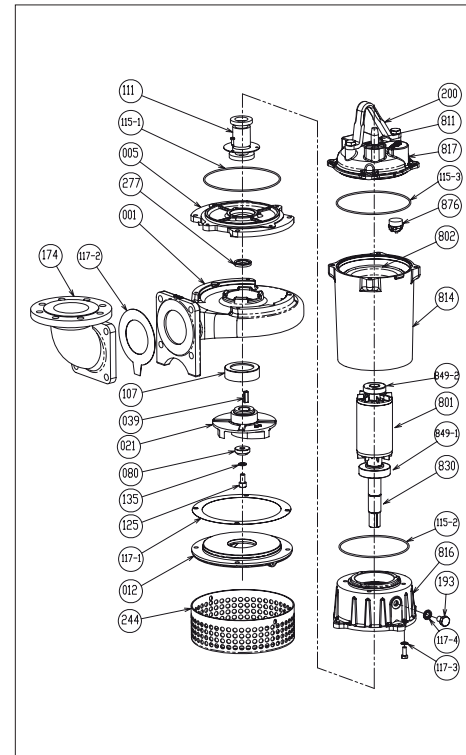
100DS57.5



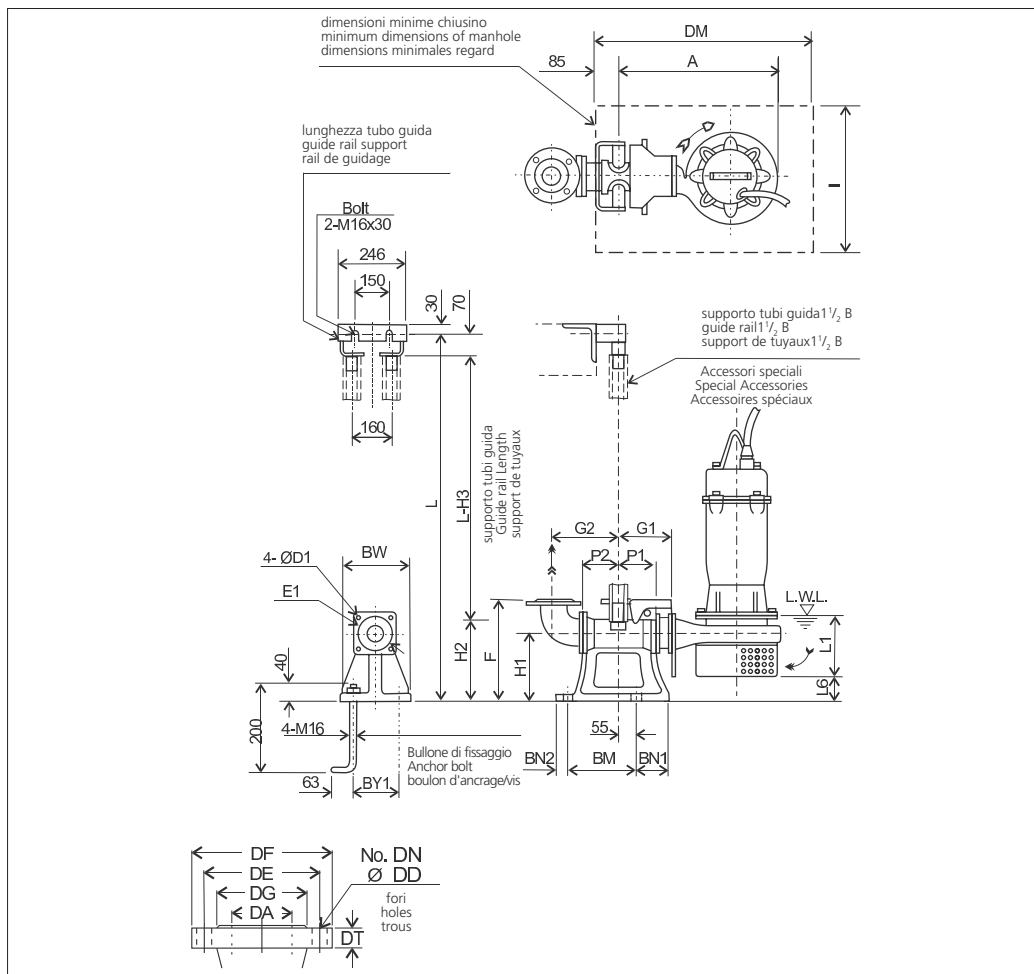
DIMENSIONI • DIMENSIONS • DIMENSIONS



RICAMBI • REPLACEMENT PARTS • PIÈCES DE RECHANGE



001	Corpo pompa - Pump casing - Corps de la pompe
021	Girante - Impeller - Roue
039	Linguetta - Key - Languette
080	Bussola - Bushing - Bague d'usure
107	Anello di rasamento - Wear ring - Anneau arasement
111	Tenuta meccanica - Mechanical seal Garniture mécanique
115-2	Anello OR - O-ring - Bague OR
115-3	Anello OR - O-ring - Bague OR
115-1	Anello OR - O-ring - Bague OR
117-1	Guarnizione - Gasket - Joint
117-2	Guarnizione - Gasket - Joint
117-3	Guarnizione - Gasket - Joint
135	Rondella - Washer - Rondelle d'étanchiété
277	Anello tenuta - V-ring - Joint de garniture
811	Cavo - Cable - Câble
849-1	Cuscinetto - Bearing - Coussinet
849-2	Cuscinetto - Bearing - Coussinet
876	Termoprotettore - Auto cut - Protection thermique



MODELLO KIT SCIVOLO DISCESA (QDC)
QDC MODEL
MODÈLE KIT PIED D'ASSISE (QDC)
LL 100

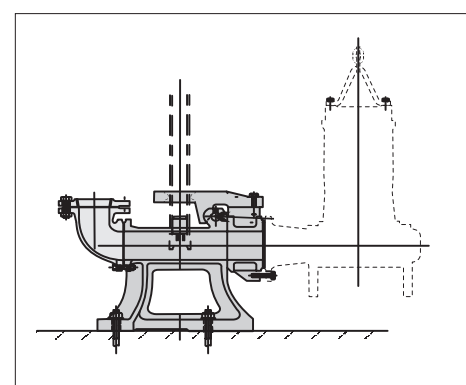


TABELLA DIMENSIONI QDC • QDC DIMENSIONS TABLE • TABLEAU DE DIMENSIONS QDC

DA	Modello Model Modèle	[kW]	A	P1	P2	G1	G2	F	H1	H2	H3	L1 (*)	L6	BN1	BN2	BM	BY1	BW	DM	I	D1	E1	QDC Mod. [kg]	
100	100DS57.5	7.5	590	105	105	185	210	365	240	265	335	200	108	100	40	220	180	230	800	700	19	175	LL100	46